



 **LG Hausys**

www.himacs.eu

HI-MACS®

General Brochure 2020

Great ideas made possible
with HI-MACS®



Natural Acrylic Stone™

THE COLD
PRESSED
JUICERY

Images on this page: Gynecological Clinic Ritmo, © Lyle Matias | Wikus Headquarters in Spangenberg, © Markus Töhlhoff | Fitness-Studio Rocycle, © XML

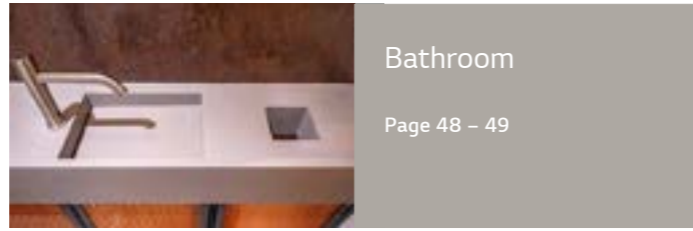
HI-MACS® General Brochure 2020

What is HI-MACS®?	Page 03
HI-MACS®. Because Quality Wins.	Page 04
Material Properties	Page 05
Working with HI-MACS®	Page 06
HI-MACS® Quality Club	Page 07
Ecology	Page 08
HI-MACS® Collections 2020	Page 09 – 23
HI-MACS® Projects	Page 24 – 57
LG Hausys Network Specifications	Page 58 – 61
HI-MACS® Colours	Page 62 – 65
Sinks & Basins	Page 66 – 69
Baths & Shower Trays	Page 70 – 71
Contact	Page 72



Living Spaces

Page 46 – 47



Bathroom

Page 48 – 49



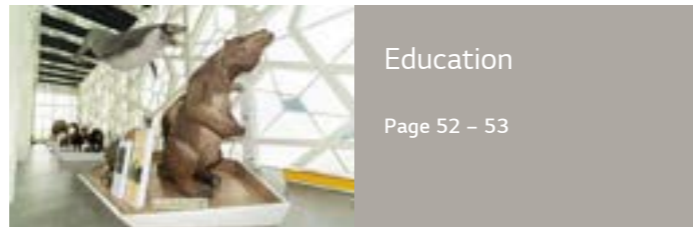
Furniture Design and Product Design

Page 50



Outdoor

Page 51



Education

Page 52 – 53



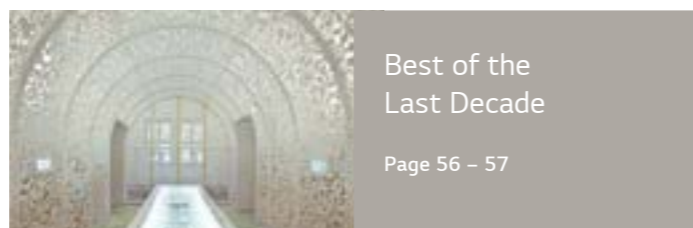
Airport

Page 54



Marine Industry

Page 55



Best of the Last Decade

Page 56 – 57



Public Buildings and Offices

Page 25 – 31



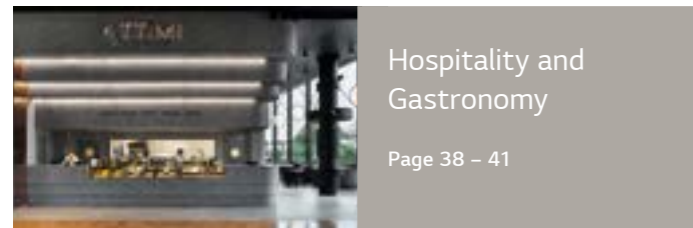
Facades and Wall Cladding

Page 32 – 33



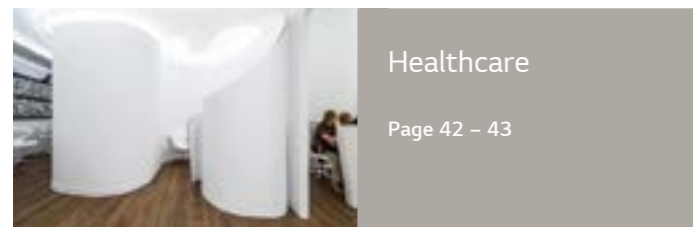
Shops and Exhibitions

Page 34 – 37



Hospitality and Gastronomy

Page 38 – 41



Healthcare

Page 42 – 43



Kitchen

Page 44 – 45

What is HI-MACS®?

An outstanding material.

HI-MACS® is a delicate composition of acrylic, minerals and natural pigments that combine to create a smooth, non porous, thermoformable and visually seamless surface.

The material meets the highest standards for quality in all respects: material performance, fabrication, functionality and hygiene. Thanks to these qualities and the outstanding flexibility in fabrication and design, HI-MACS® offers countless advantages over conventional materials.

And an ongoing inspiration.

We have gathered a number of projects here, all of which are capable of inspiring and creating a desire to tread new paths.

HI-MACS®. Because Quality Wins.

Photographed by Rafael Krötz

Quality is the longest warranty in the market.
We support our Quality Club Members with a 15 year warranty.
The longest warranty in the solid surface market.

Quality is in our DNA.

HI-MACS® benefits from the high-tech infrastructure and development-experience of the LG Group who regularly bring stunning innovations to life. LG guarantees superior quality for all raw materials; the acrylic in HI-MACS® is produced by our own factories, certifying excellence from the source.

Quality is available.

We stock the entire colour and product range in one European central warehouse and 40 local warehouses in Europe.

Quality is worldwide support.

Full access to LG after-sales support and fabrication network worldwide.



Quality is an excellent network of highly skilled craftsmen.

Our highly skilled fabrication partners enjoy regular training to provide you with the best possible product. They have access to the best in class training material and support. The most skilled fabricators of HI-MACS® are easy to identify as they are certified members of the HI-MACS® Quality Club. Contact us for your nearest member.

**Outstanding features abound.
A compelling material.**



Simple processing

Although HI-MACS® is almost as robust as stone, it can be worked in the same way as wood. Using conventional carpenters' tools, this solid surface material can be sawn, routed or drilled. Thanks to the new Thermalcure-technology the surface of HI-MACS® performs better than the standard in Solid Surface. You save precious time because it is easier to work with.



Seamless perfection

HI-MACS® allows for visually seamless fabrication. Smooth integration creates large areas without visible joints or edges as well as the flush mounting of bowls. This results in extremely hygienic, easy-to-clean installations, ideally suited for use in hospitals and laboratories.



Three-dimensional design

HI-MACS® boasts a simple heating process and three dimensional thermoforming capabilities. This enables greater forming flexibility compared with other conventional materials so that spectacular ideas can quickly take on a concrete shape. HI-MACS® Ultra-Thermoforming formula allows the material to be better shaped; the minimal internal radius of 6 mm (previously 50 mm) opens a wholly new design dimension.



Dramatic translucency

Certain colours and thicknesses of HI-MACS® exhibit a subtle translucency when exposed to light. The translucent properties of HI-MACS® make it the perfect choice for lamps and illuminated furnishings.



Huge colour spectrum

Colour selection is a crucial factor when it comes to high-quality design. HI-MACS® offers an enormous range of colours. No matter what colour you choose, HI-MACS® remains 100% homogeneous.

All fabrication pictures on this page: Photographed by Dominik Oberreis
Sample picture: Photographed by Petr Krejčí

Working with HI-MACS® is easy.
Everything you need will already be in your workshop.



As a woodworking expert, you only need to open your workshop to find everything you need: talented craftsmen and tools for working with hardwood. That's all you need to saw, drill and sand this material.

And if you have a pre-heating oven or a heating press, then you'll find it easy to heat the material for thermoforming. That's all there is to it: the carpentry workshop that once specialised in timber materials, is transformed in an instant into a company that can also offer modern stone products as well.

Welcome to the HI-MACS® Quality Club.

The members of the HI-MACS® Quality Club are our closest partners when it comes to working with the material and experiencing its tangible benefits:

- We train our partners with a comprehensive training programme, the best trainers and the best working manual.
- We cooperate closely with our Quality Club members on all material and work-related questions and guarantee comprehensive technical support.
- We also actively support our partners in sales, including forwarding specific project enquiries.
- Our partners benefit from our Europe-wide marketing and communication strategy: PR, traditional advertising, online communication, social media, as well as involvement in all the relevant industry events.
- Partners who belong to the HI-MACS® Quality Club are exclusively able to offer a 15-year material guarantee, the longest guarantee in the solid surface market, and thus gain a crucial competitive edge when pitching for projects.



Join the HI-MACS® Quality Club!
Certify your fabrication expertise by taking part in our Training Programme and become a HI-MACS® Quality Club Member.



Thinking green means caring about our environment throughout the whole product life-cycle

Environmentally friendly products are a necessity nowadays. What is even better is when the entire product cycle – from its production and transport through to its disposal – meets the highest environmental standards. LG Hausys leads the way in terms of environmentally responsible action on a global scale, always staying true to this promise. We take environmental actions very seriously.

©iStockphoto - 4maksym

These facts speak for themselves.

- 1. Material composition:** Aluminium trihydroxide, the main component of HI-MACS®, is a resource-efficient bi-product of bauxite (aluminium production). This allows a valuable raw material, that would otherwise be discarded without being used, to be utilised in a meaningful way (“**Second life concept**”).
- 2. Material safety:** Extensive studies – within LG Hausys’ own laboratories as well as tests carried out by other renowned independent institutions – have shown that the HI-MACS® material itself, as well as the cured adhesive, are **completely free from formaldehyde and emissions**. HI-MACS® has been awarded the Greenguard Gold Indoor Air Quality Certificate.
- 3. Manufacturing process:** The production of this solid surface material is marked by an excellent energy balance. In recent years, the company was very successful in achieving ambitious goals in terms of waste reduction and water conservation. In addition, HI-MACS® plants in Cheongju (Korea) and Atlanta (USA) meet all environmental standards.
- 4. Transport:** Within Europe, HI-MACS® observes the Euro-5 standards for reduced particulate emissions. The partner-network of LG Hausys Europe consists of carefully selected partners with the highest environmental standards: for example, the State-of-the-Art logistics centre in the Netherlands is one of the first buildings to have been constructed in accordance with the WELL Building Standards and awarded the BREEAM Certificate. This means that it meets the highest requirements for environmentally friendly and healthy construction.

5. Processing: The material allows for virtually waste-free processing. In addition, HI-MACS® installations are extremely strong and durable. They can easily be renewed to their original appearance, meaning they don’t have to be replaced, thus giving a positive long-term environmental footprint.

6. Certificates, Environmental Product Declarations and regular tests: The topic of “ecological construction” is becoming increasingly important: numerous internationally recognized certificates and product declarations underline the ecological quality of HI-MACS®.

For instance, HI-MACS® has achieved Quality Level 4 of 4 for local environmental impact in DGNB 2018 criteria by the German Sustainable Building Council*.

HI-MACS® can also contribute to BREEAM** International New Construction 2016 certification, the most important global rating method for sustainable architecture, as the entire product complies with Hea 02 Indoor air quality.

Furthermore, HI-MACS® achieved RSCS summary score level in Mat 03, responsible sourcing of construction products for the entire product: RSCS level 1.

Without exception, all HI-MACS® products are produced in compliance with the environmental standard ISO 14001. LG Hausys voluntarily subjects the product to regular environmental audits and energy consumption analyses and systematically publishes the results.

*Die deutsche Gesellschaft für Nachhaltiges Bauen

**Building Research Establishment Environmental Assessment Method

Eden Plus. The HI-MACS® ecological answer.

LG Hausys has an environmentally friendly solution with the Eden Plus colour collection: the range consists of 10 warm, natural and earthy tones. The Eden Plus range has been presented with an award by the US Scientific Certification System for its recycled material content, with between 6% and 10% of the content being recycled material. Projects completed in HI-MACS® Eden Plus can also include LEED (Leadership in Energy and Environmental Design) certification from the US Green Building Council and will therefore gain valuable points in different LEED categories. Another great reason to opt for HI-MACS®.



The HI-MACS® Collections 2020.

More than the sum of the parts.

Photographed by Petr Krejčí

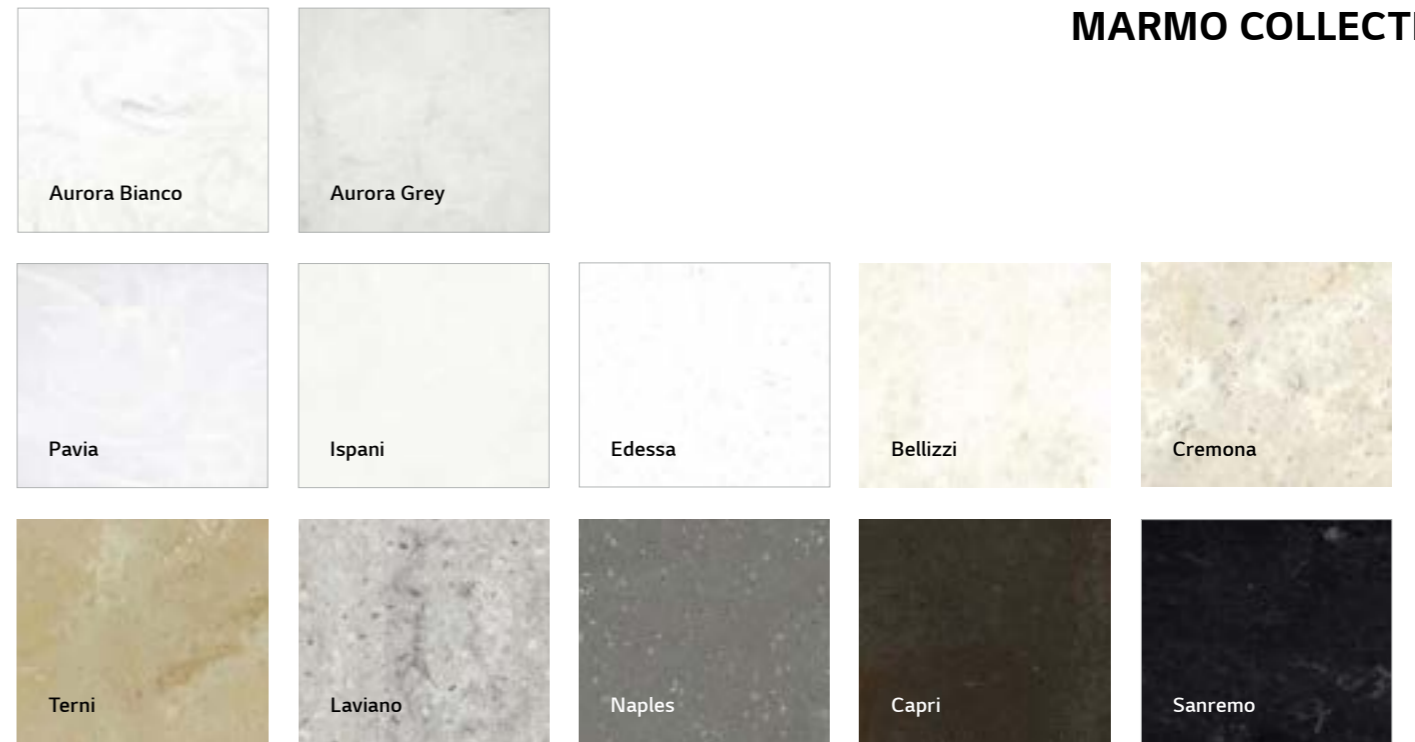
STRATO COLLECTION



The Strato Collection enhances the HI-MACS® colour range with brand new design possibilities: the striations create geometry through its soft structure and subtle look. The skilful use of the new linear pattern, vertically or horizontally, allow for great variation in each and every project.



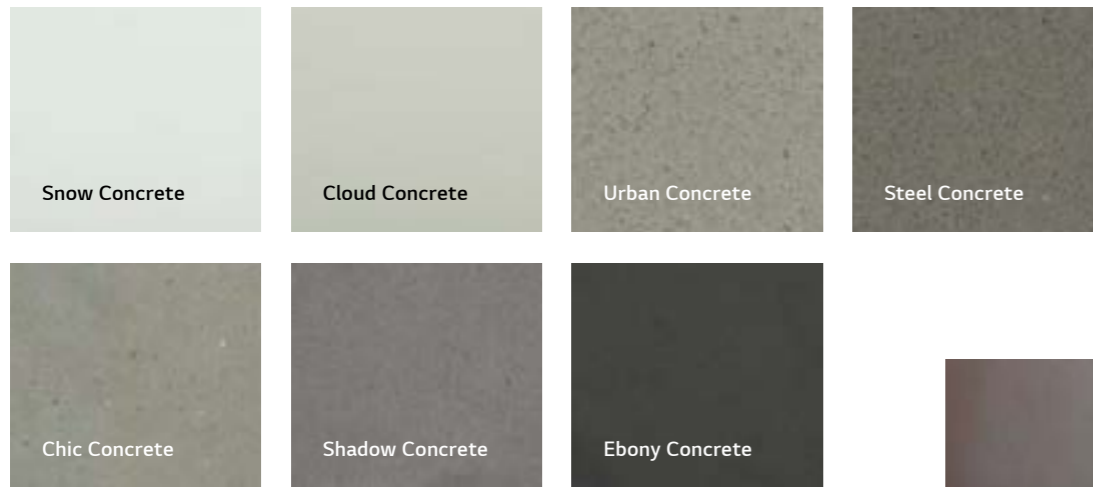
MARMO COLLECTION



The HI-MACS® Marmo Collection has been updated with new colours to address the current trends for top-quality marble aesthetics, ranging from semi-translucent white, through shades of grey, to striking dark brown and anthracite tones.



CONCRETE COLLECTION



The industrial look of concrete combined with the incredible flexibility of HI-MACS®. The Concrete Collection adds huge opportunities for great designs to architects and designers.

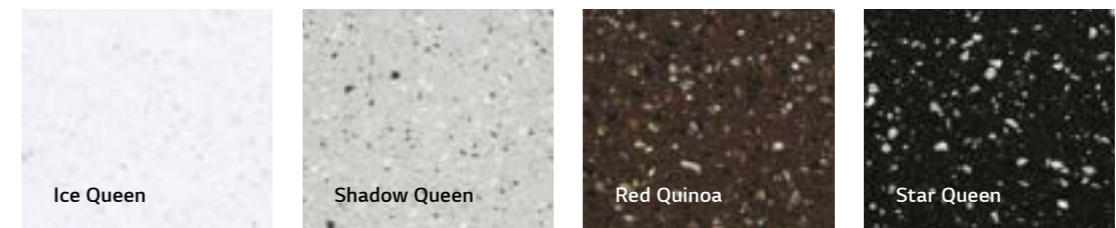


LUCIA COLLECTION



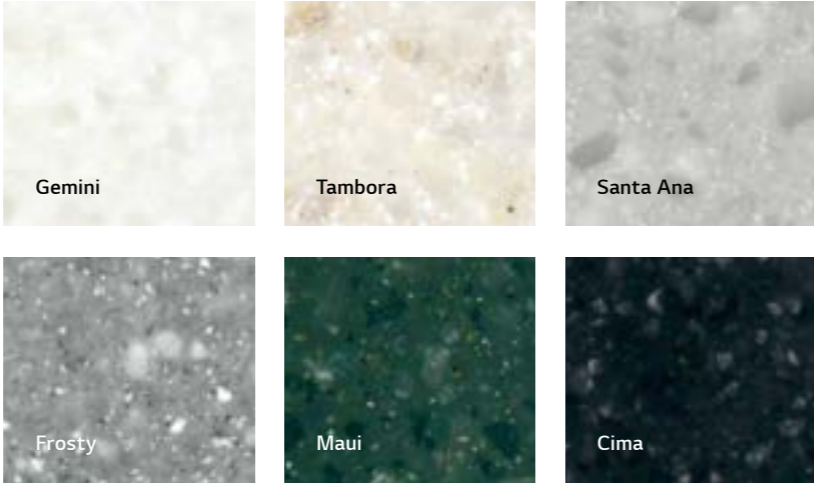
Studio Podirini, studiopodirini.com

This collection focuses on the natural trend colours black, white and grey. The lively and homogeneous structures add character and expression to the colours. Not surprising, as the renowned Dutch designer, Marcel Wanders, designed three of these colours.



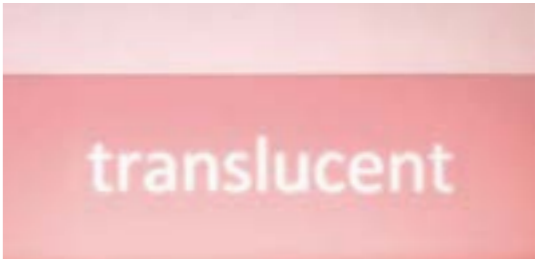
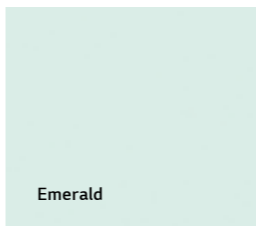
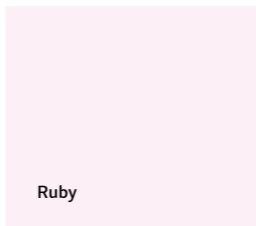
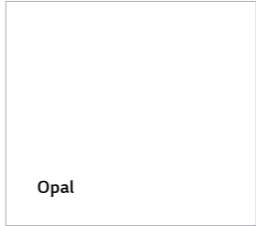
VOLCANICS COLLECTION

The large particles of the Volcanics shades add a sense of style to any design. When used on a large scale the result is a dramatic showpiece.



Translucency and effective use of light are decisive design elements of contemporary architecture – the shades of the Lucent Collection, with their exceptional light translucency, allow for spectacular designs. Whether effectively backlit or simply illuminated, the Lucent colours of the architecture always add an elegant touch thanks to their characteristic reaction to light.

LUCENT COLLECTION



Oblique Men - Design: The Invisible Party - Fabrication: Van Assem Interieurbouw - HI-MACS® Supplier: Baars & Bloemhoff, The Netherlands - Material: HI-MACS®, Emerald - Photographed by Sal Marston Photography

Raiffeisen Bank Mendrisio - Design by Studio d'architetture Casali Sagli - Fabrication: Il Falegname Fabrizio Sagli - Material: HI-MACS® Opal - Photographed by Claudio Bader



SOLIDS COLLECTION

Alpine White	Diamond White	Arctic White	Ivory White	Nougat Cream
Satin White	Cream	Almond	Babylon Beige	Toffee Brown
Suede	Grey	Marta Grey	Steel Grey	Concrete Grey
Lemon Squash	Banana	Orange	Fiery Red	Festival Pink
Light Green	Sky Blue	Evergreen	Deep Indigo	Cosmic Blue
Midnight Grey	Mink	Dark Night	Coffee Brown	Black

The classic in terms of solid surfaces – a wide range of attractive shades of white lies at the heart of this collection. Complemented by colourful, dynamic uni-shade accents from Lemon Squash to Festival Pink. The timeless collection offers the perfect colour for every design.








Design: Herrmann Flavio - Fabrication: IL Falegname Fabrizio Sagl - HI-MACS® Supplier: klausler acrylstein ag, Switzerland - Photographed by Claudio Bader

ASTER COLLECTION



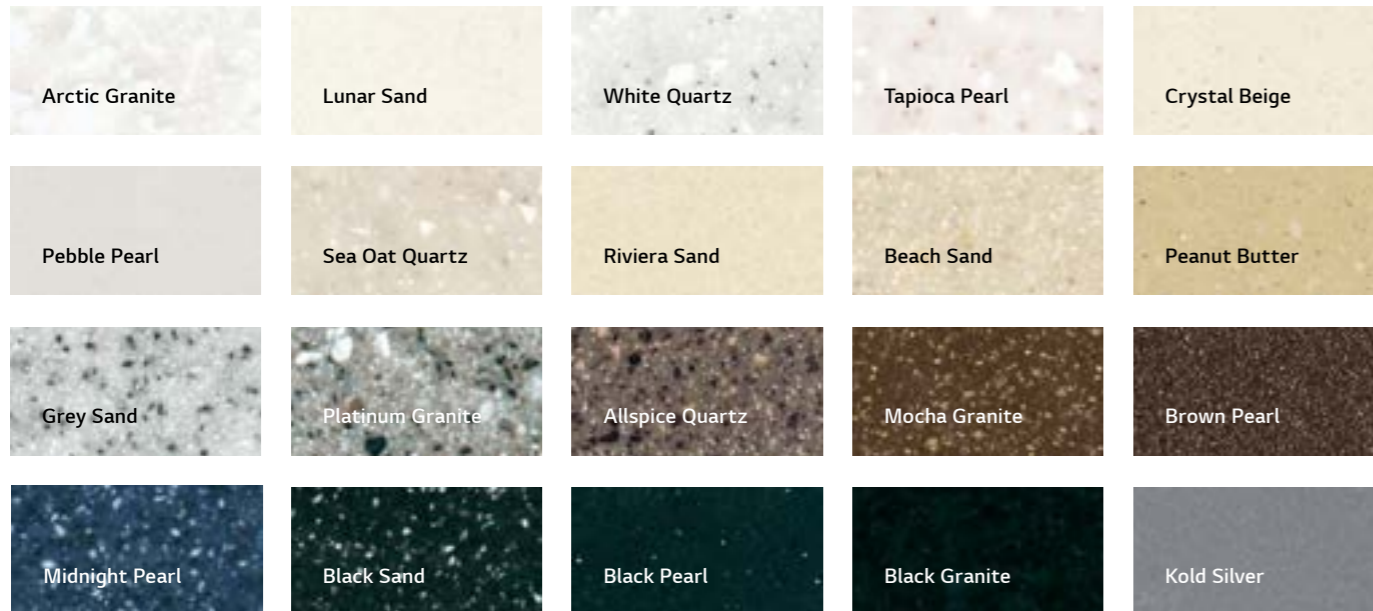
Studio Podrini, studiopodrimicom

Aster is a collection of elegant shades of grey, ranging from almost white to a dramatic dark grey, all with a gorgeous mother of pearl shimmer.

 Nebula	 Andromeda	
 New Moon	 Venus	 Hercules

GRANITE, SPARKLE, QUARTZ, SAND & PEARL COLLECTIONS

Ultimate elegance thanks to lively textures, harmoniously natural tones and maximum subtleness. The Sparkle, Sand & Pearl, Granite and Quartz collections are perfect either alone or in combination with other colours.



HI-MACS EXTERIA®



With HI-MACS Exteria®, it's now even more fun to be on the move outside.

For years, spectacular façades have been made from HI-MACS® all over the world. In doing so, the advantages are often skilfully staged: artistic relief milling with typography, flush mount company logos, backlit patterns and other spectacular light effects and curvy designs. And every good design inspires even more creativity.

With HI-MACS Exteria®, LG Hausys is now expanding exterior possibilities.

- S728 (Alpine White) is the FR formulation, which for many years, has offered increased fire resistance – certified by the ETA.
- S828 (Alpine White) is the new exterior formulation offering even better UV resistance, which is particularly important when the façade is exposed to high levels of sunlight.
- All other HI-MACS® colours labelled with a sun symbol can also be used outdoors.

HI-MACS Exteria® Certificates



HI-MACS® by LG Hausys has obtained the French QB certification and CSTB Atec "Avis Technique" for facade applications in S828 Alpine White. (Avis Technique 2.2/18-1795_V1).



Fixed with KEIL inserts and a BWM structure, HI-MACS® façade in S728 – Alpine White successfully passed the ETA tests (European Technical Agreement).



Permanent innovation is in our DNA

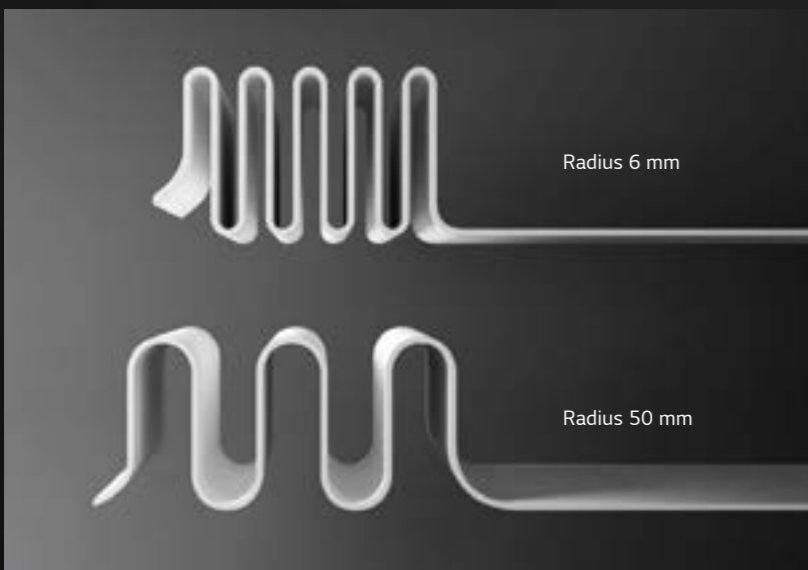


**HI-MACS® Ultra-Thermoforming:
Extreme curves**

The HI-MACS® Ultra-Thermoforming formula allows for even more extreme curves. The minimum inner radius of 6 mm (usually 50 mm) offers a completely new design dimension. This product has 30% greater flexibility, which allows designers to create much sharper curves. Even the smallest radii can be created without affecting the material properties.

Especially in furniture design, where it is often about filigree details, but also in the kitchen and bathroom, the new feature offers clear advantages: the radii of deep-drawn basins can be made significantly smaller, which improves the appearance and size of the basin.

The new ultra-thermoforming quality in popular Alpine White is available in a thickness of 12 mm and can be used indoors and outdoors. The same warranty conditions apply as for all other HI-MACS® sheets.



HI-MACS® high-performance adhesive: lives up to its promise

The main task of adhesives is to combine two parts permanently – our adhesive with improved formulation does this perfectly, thanks to its much stronger bond. In addition, its viscosity has been significantly improved; this means it can be used more precisely, eliminating any annoying “bleeding”. The adhesive’s UV resistance is also improved.



HI-MACS® Intense Ultra.
Work with Power.



Intense Ultra Grey



Intense Ultra Dark Grey



Intense Ultra Black

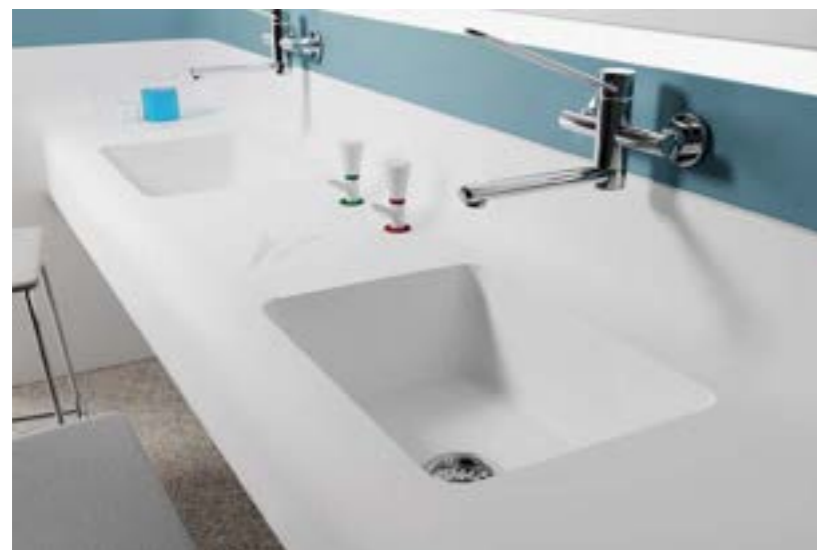
HI-MACS® Intense Ultra is based on a brand-new material formulation and combines Intense Colour technology with Ultra-thermoforming. Dark colours become more “intense”, darker and also more resistant, with less visible scratches. The new HI-MACS® Intense Ultra, also has excellent thermoforming capabilities. This new formula allows the material to reach a very small internal radius, up to 6 mm, with almost no whitening effect even when using dark colours.



HI-MACS® Intense Ultra was awarded the prestigious Archiproduct Design Award 2019.

Perfect for kitchen, laboratory and bathroom.

With HI-MACS®'s comprehensive range of sinks, basins, baths and shower trays, creative planners have all the options to design functional and tasteful kitchens and bathrooms, sanitary facilities, hospitals and much more. With the exception of some bathroom bowls, all these products are designed to be flush- or under-mounted, in combination with HI-MACS® sheet materials.



The coordinated sinks can be installed flush- or under-mounted. The result is extremely hygienic, easy to maintain units from a single cast. Perfect for the kitchen and laboratory.

HI-MACS® SINKS, BASINS, BATHS & SHOWER TRAYS



All images on this page: Studio Podrini, studiopodirini.com



The new shower trays and baths from HI-MACS® offer a pleasant, warm touch and silky matt elegance. Three shower trays and three baths extend the product offering for classy and elegant bathrooms.



In addition, the HI-MACS® top-mounted range offers three exclusive countertop basins that perfectly capture the trend of linear bathroom designs.

HI-MACS® Projects

Great spaces and installations from all over Europe.

Public Buildings and Offices

The requirements for public spaces are very demanding. It's therefore good to know that HI-MACS® regularly undergoes all of the relevant product tests and holds all the required certificates to prove its superior quality.



All images on this page: Photographed by Sandra Kühnapfel

PalaisPopulaire

Location: Berlin, Germany

Design: Kuehn & Malvezzi, Germany, kuehnmalvezzi.com

Fabrication: FS Möbelgestaltung GmbH, Germany, moebel-spitzer.de

HI-MACS® Supplier: Klöpfer Surfaces, Germany

Material: HI-MACS®, Alpine White



The quality of this space is based on its perfect mix of materials. Polished and matt finishes, vintage style and modernity: the architecture works beautifully with the properties of the materials used. HI-MACS® creates visual statements with its clean, smooth look. Even the large locker unit is transformed into a stylish room feature, thanks to the precise workmanship.

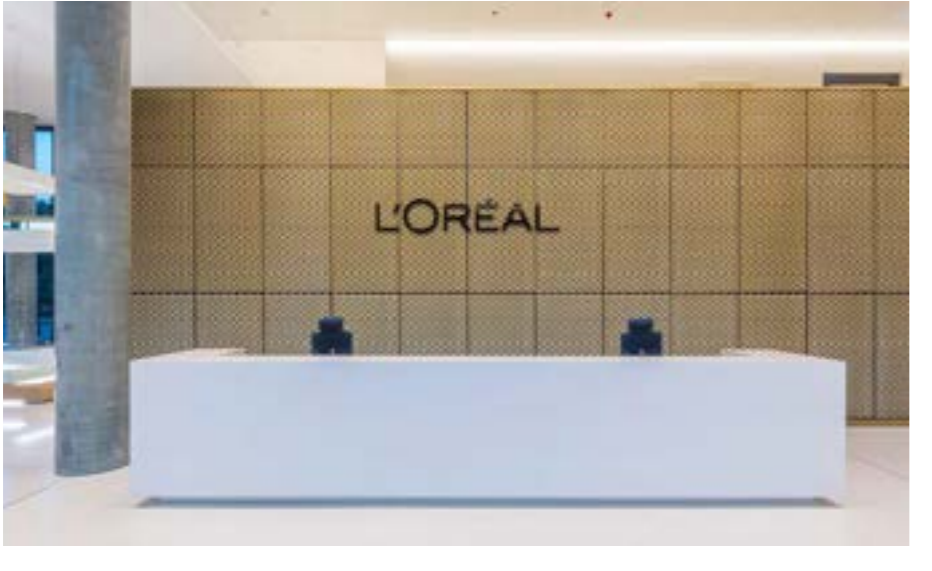
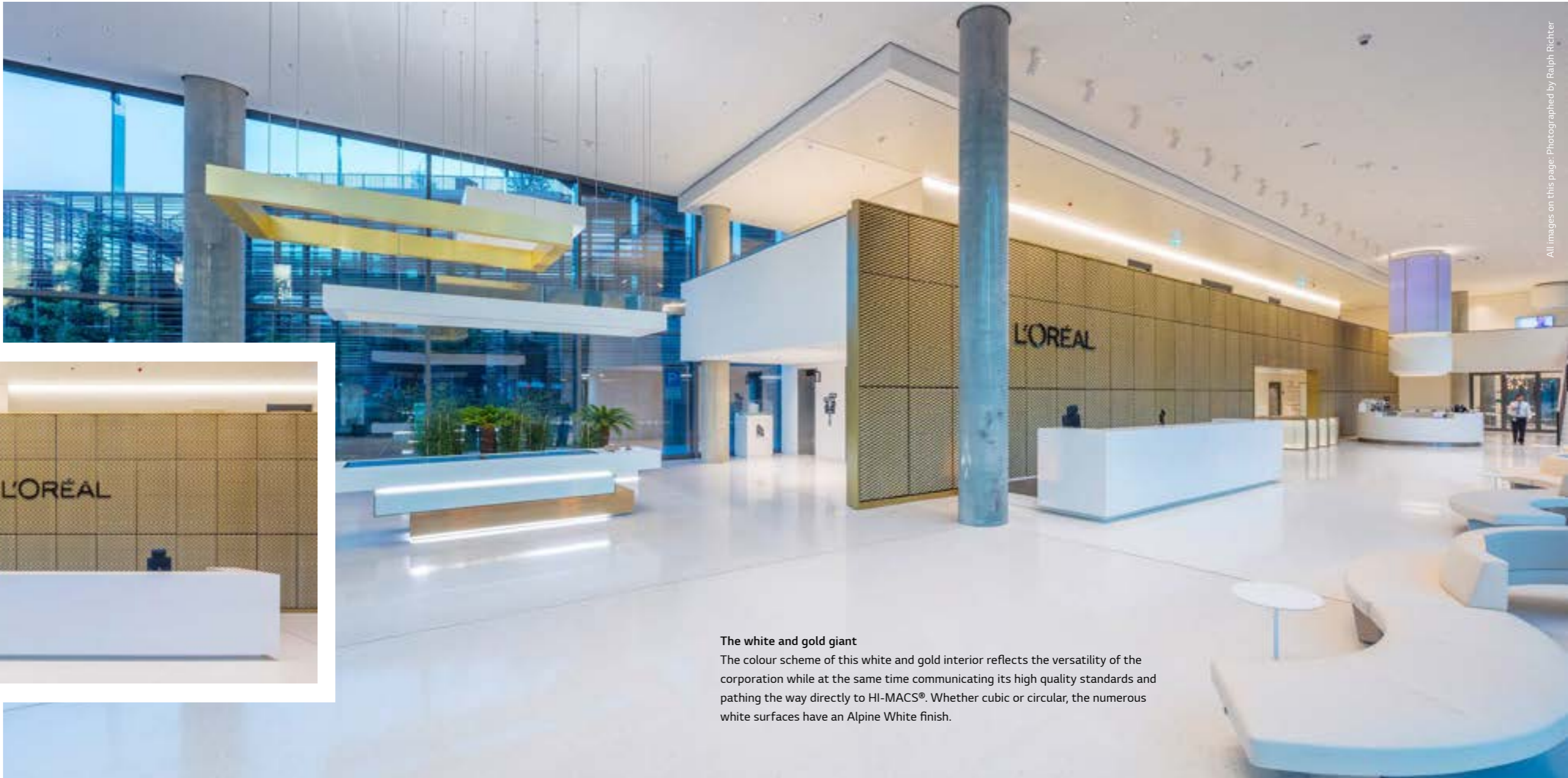


Large seamless surfaces, such as this white XL countertop, are just a few of the special characteristics of HI-MACS®.



**L'Oréal Headquarters
in Dusseldorf**

Location: Dusseldorf, Germany
 Design: HPP architects, Germany, hpp.com
 Fabrication: Schumann Möbelwerkstätte
 GmbH, Germany, schumann-ak.de
 Material: HI-MACS®, Alpine White, Black

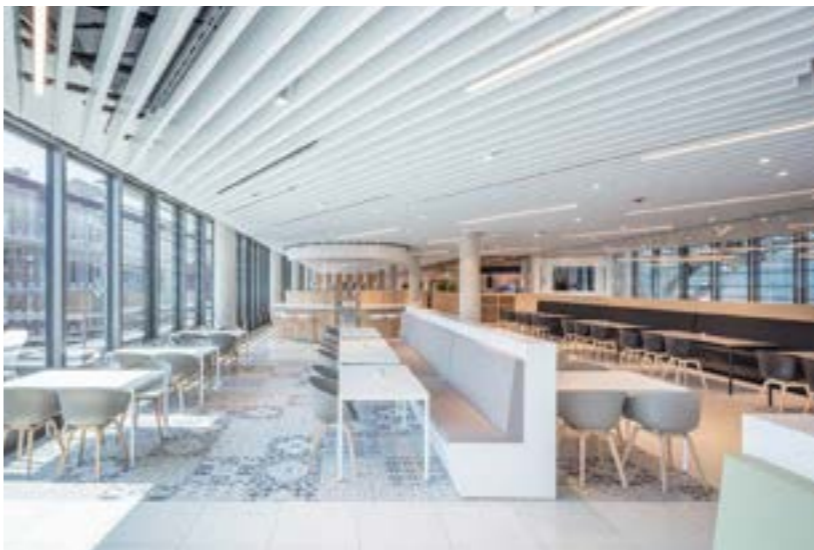


The white and gold giant
 The colour scheme of this white and gold interior reflects the versatility of the corporation while at the same time communicating its high quality standards and pathing the way directly to HI-MACS®. Whether cubic or circular, the numerous white surfaces have an Alpine White finish.

All images on this page: Photographed by Ralph Richter



Minimalist shapes, seamless finish: HI-MACS® in catering.





Wikus Headquarters in Spangenberg

Location: Spangenberg, Germany

Design: Bieling Architekten AG, Germany, bieling-architekten.de

Fabrication: Dreer-Graf GmbH, Germany, dreer-graf.de

HI-MACS® Supplier: Klöpfer Surfaces, Germany

Material: HI-MACS®, Alpine White

On the upward wave

Many architects use a combination of linearity and curvaceousness to create a playful result as shown here. It requires a material that can be transformed to create emotional lines. HI-MACS® was thermoplastically moulded for use in the staircase, for the reception desk and in the lounges, and was then joined to form visually seamless elements.



Beautiful and airy: the sweeping balustrade transforms the staircase into a feather-light joy to behold.



Fitness-Studio Rocycle

Location: Amsterdam, The Netherlands

Design: XML, The Netherlands, x-m-Lorg

Fabrication: Dylan & van Laatum Interieurbouw, The Netherlands

HI-MACS® Supplier: Baars & Bloemhoff, The Netherlands

Material: HI-MACS®, Alpine White

Hygienic HI-MACS® also dominates in the washrooms.



Style meets solidity and hygiene in modern sports facilities

The quality of busy places, such as this gym in the Dutch city of Amsterdam, is often measured by the condition and cleanliness of the fixtures. It is therefore crucial that the most appropriate materials are used: tough and easy-clean, and above all representing a statement of style and taste.



Consulate of Morocco

Location: Amsterdam, The Netherlands

Design: Studio OxL, The Netherlands, studio-oxl.com

Fabrication: STOOFF, The Netherlands, stooff.com

HI-MACS® Supplier: Baars & Bloemhoff, The Netherlands

Material: HI-MACS®, Alpine White



Set the Pattern

Traditional, graphic patterns spring to mind whenever one thinks of Morocco: delicate yet striking, they have been synonymous with traditional craftsmanship for centuries. At the Moroccan Consulate in Amsterdam, the patterns were milled into HI-MACS® on a state-of-the-art CNC machine.

Like a white spiral

A stairwell is generally seen as a rather sober place. However, in this building in the Champagne region, the open design of the staircase transforms it into an impressive architectural object with artistic qualities. A key detail: the handrail has a lovely tactile finish, and importantly, can be cleaned with ease.



All images on this page: Photographed by Eric Vandenberg



A handrail and subtle lighting in one: the delicate LED strip was concealed in the pre-milled groove.



CMMA Headquarters

Location: Châlons-en-Champagne, France

Design: Patrick Planchon and Franck Deroche, France, franckderoche.ultra-book.com

Fabrication: Landry Gobert, France, landrygobert.com

HI-MACS® Supplier: Aska Interior, France

Material: HI-MACS®, Alpine White

Facades and Wall Cladding

HI-MACS® superior quality makes it ideal for using in cladding projects, facades and wall linings.

All images on this page: Photographed by Mark Runnacles Photography



Fort Kinnaird

Location: Edinburgh, United Kingdom

Design: Leonard Design, United Kingdom, leonard.design

Fabricator: Independent Furniture and Interiors, United Kingdom, independentfurniture.co.uk

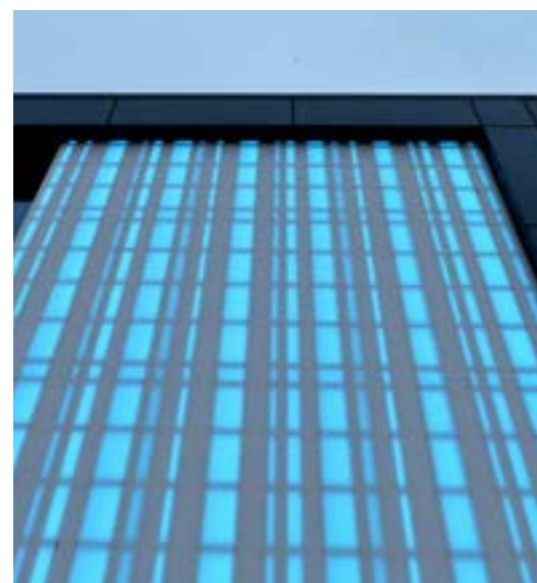
HI-MACS® Supplier: James Latham, United Kingdom

Material: HI-MACS®, Diamond White, Opal



Exceptionally beautiful in the blue hour

One of the most beautiful qualities of HI-MACS® is its translucency: the shades of the Lucent Collection in particular – here Opal combined with a solid Diamond White colour – look really impressive. It is the bluish, shimmering chequered façade of this building which really stands out.



Stratus Building

Location: Las Palmas de Gran Canaria, Spain

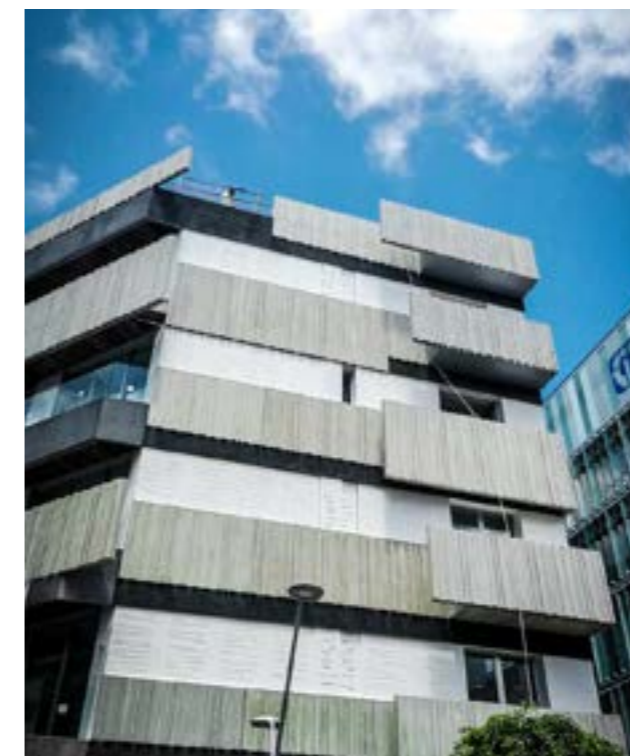
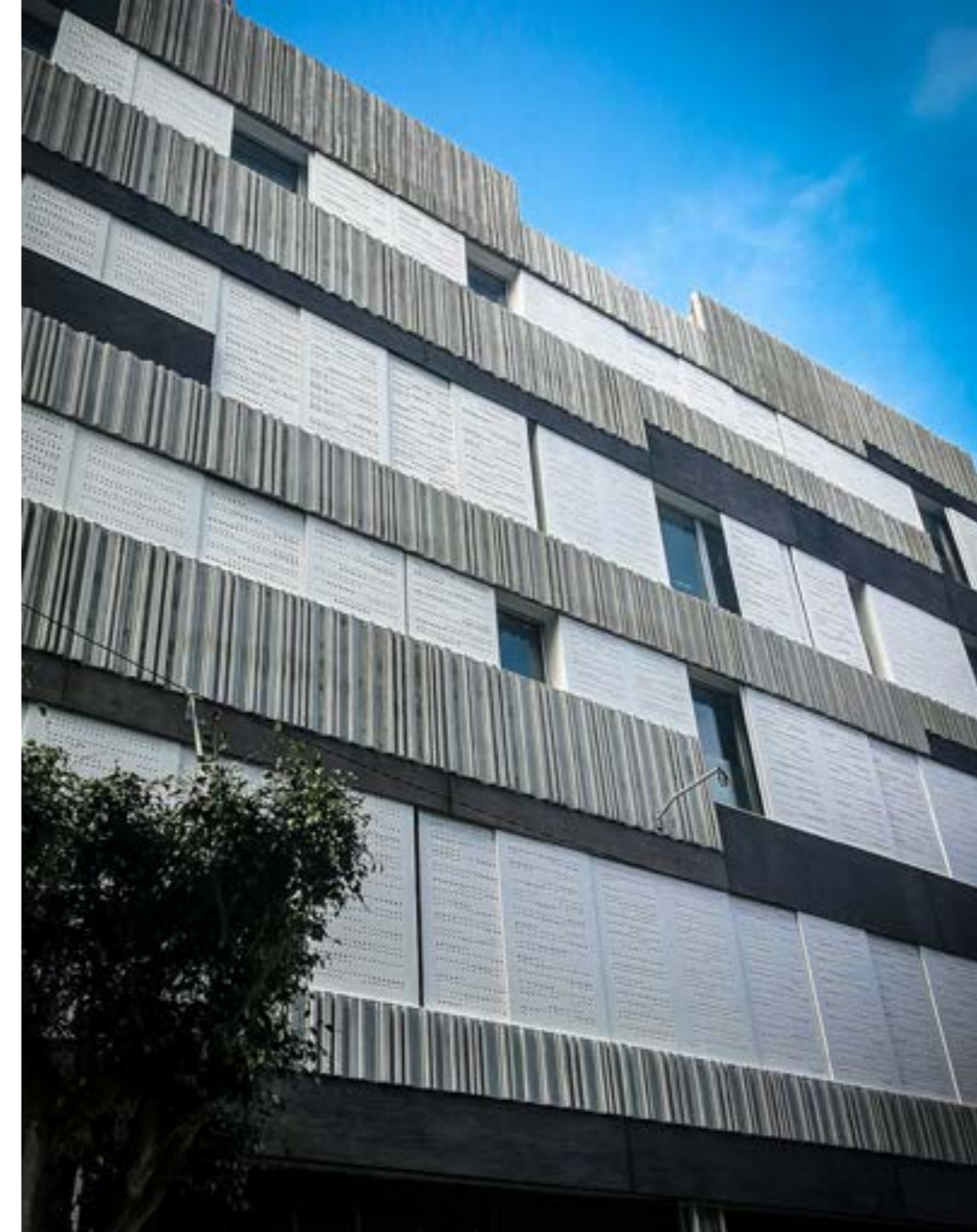
Design: Bello y Monverde Arquitectos, Spain, belloymonverde.com

Fabrication: Acrimobel, Spain

Material: HI-MACS®, Alpine White

Sophisticated interplay of horizontal and vertical lines

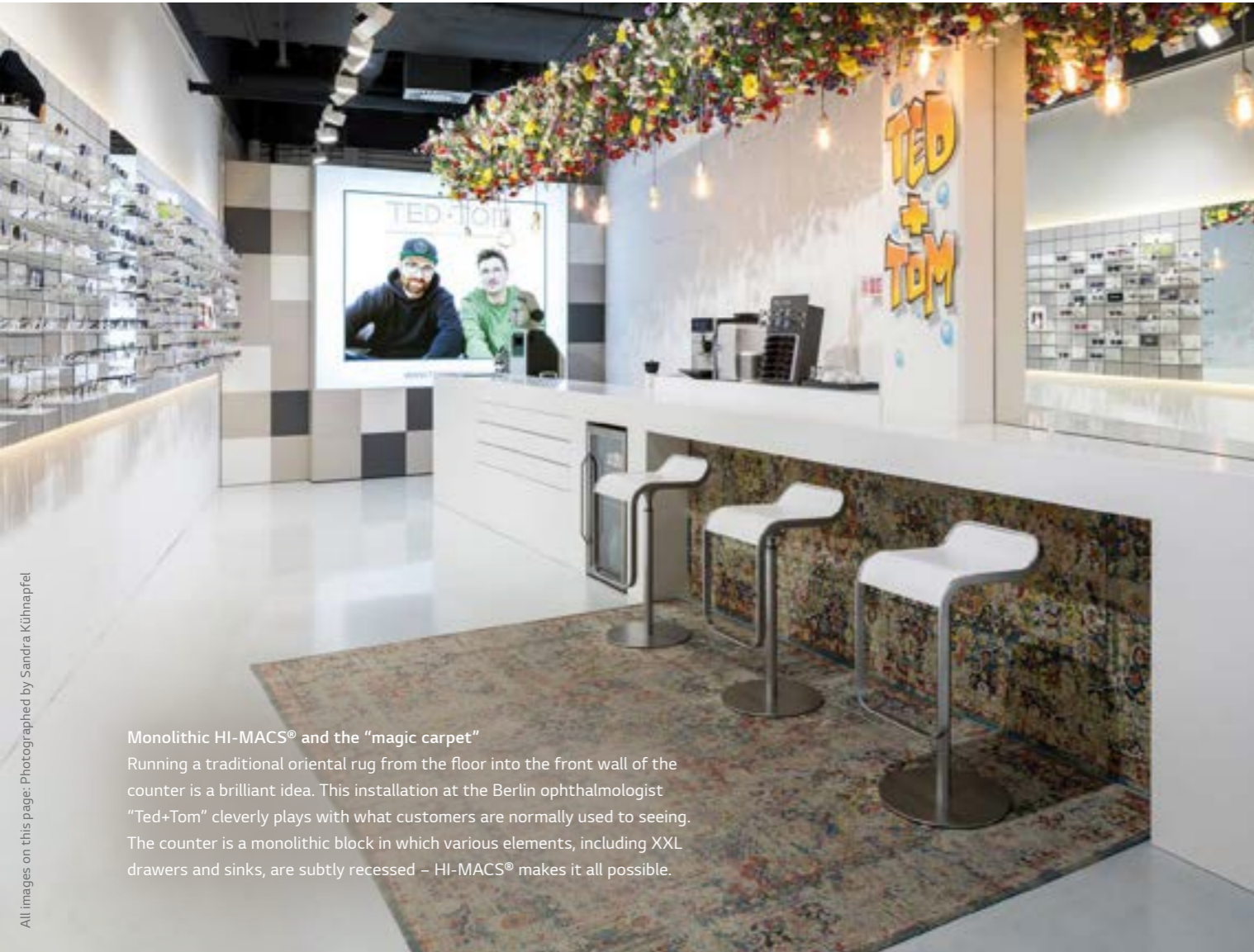
When you look closely, you can see that the cladding, which is applied horizontally, features vertical ribbing, and the vertical HI-MACS® panels boast a horizontal pattern. Both combine to create a fascinating overall impression. The irregular grid pattern of the edges of the HI-MACS® panels gives them the appearance of natural stone. At night, the light refraction of the material creates a further vibrant effect on the façade.



All images on this page: Photographed by Luis Duque

Shops and Exhibitions

It is an accepted fact in retail, that no compromises can be made in terms of quality. And HI-MACS® does just what the high-tech brand LG Hausys promises. With its limitless possibilities, the material meets the demanding requirements to perfection.



Monolithic HI-MACS® and the “magic carpet”

Running a traditional oriental rug from the floor into the front wall of the counter is a brilliant idea. This installation at the Berlin ophthalmologist “Ted+Tom” cleverly plays with what customers are normally used to seeing. The counter is a monolithic block in which various elements, including XXL drawers and sinks, are subtly recessed – HI-MACS® makes it all possible.

Optician Shop Ted+Tom

Location: Eastside Mall, Berlin, Germany
Design: Frank Kaiser Objekteinrichtung, Germany, kaiser-objekt.de
Fabrication: Frank Kaiser Objekteinrichtung, Germany, kaiser-objekt.de
HI-MACS® Supplier: Klöpfer Surfaces, Germany
Material: HI-MACS®, Alpine White



Touched a thousand times: the solid front of the drawer doubles as the handle.



“Talk to Me” installation by Steuart Padwick at Designjunction

Location: King’s Cross, Designjunction, London Design Festival
Design: Steuart Padwick, United Kingdom, steuartpadwick.co.uk
Fabrication: We Are Limitless Limited (WALL), United Kingdom, walldesignstudio.co.uk
HI-MACS® Supplier: James Latham, United Kingdom
Material: HI-MACS®, Steel Concrete

A sculptor uses HI-MACS® to create a symbol which represents the fight against mental illness

“I wanted a material that is easy to use, looks like concrete, is translucent once it has been machined and is suitable for installation outdoors,” explained the artist Steuart Padwick in regard to his requirements specification. The sculpture is no less impressive than the materials Padwick opted for. An over-sized figure carved in Douglas fir carries a block of Steel Concrete coloured HI-MACS®, symbolising the burden carried by people suffering with mental disability. When a person approaches the sculpture from the front and speaks to it, it moves, responding with positive uplifting words, lessening the burden which then starts to light up. Very challenging and very moving.



All images on this page: Photographed by © Daniel Shearing

Pharmacy Domenech

Location: Valencia, Spain

Design: Inside Pharmacy & A4 Studio, Spain, inside-pharmacy.com

Fabrication: Inside Pharmacy, Spain, inside-pharmacy.com

Material: HI-MACS®, Alpine White

When good design starts to float

White is always a good choice of colour for a pharmacy. The look appears to become even more lightweight when light is cleverly used in order to make the material appear as if it is "floating". The three-dimensional design of the sales counter as well as the columns in this pharmacy in the Spanish city of Valencia are manufactured from HI-MACS® and make use of the excellent "light properties" of the material.



This statement counter was designed with striking prism and pyramid shapes.

All images on this page: Photographed by Vicugo Studio



The pharmacy's logo is inserted subtly and seamlessly into all elements of the counters.



Pharmacy Gallardo

Location: Ourense, Spain

Design: Inside Pharmacy & Solo Luna Estudio, Spain, inside-pharmacy.com

Fabrication: Inside Pharmacy, Spain, inside-pharmacy.com

Material: HI-MACS®, Alpine White

Lots of little "islands" bring this pharmacy to life

While light maple wood on the back wall dominates the space, the architect opted for the display islands to be manufactured from HI-MACS®: an ultra-harmonious material mix. The convex design of the sales counters in particular feels pleasing and inviting, possible due to the smart use of thermoplastic moulding.

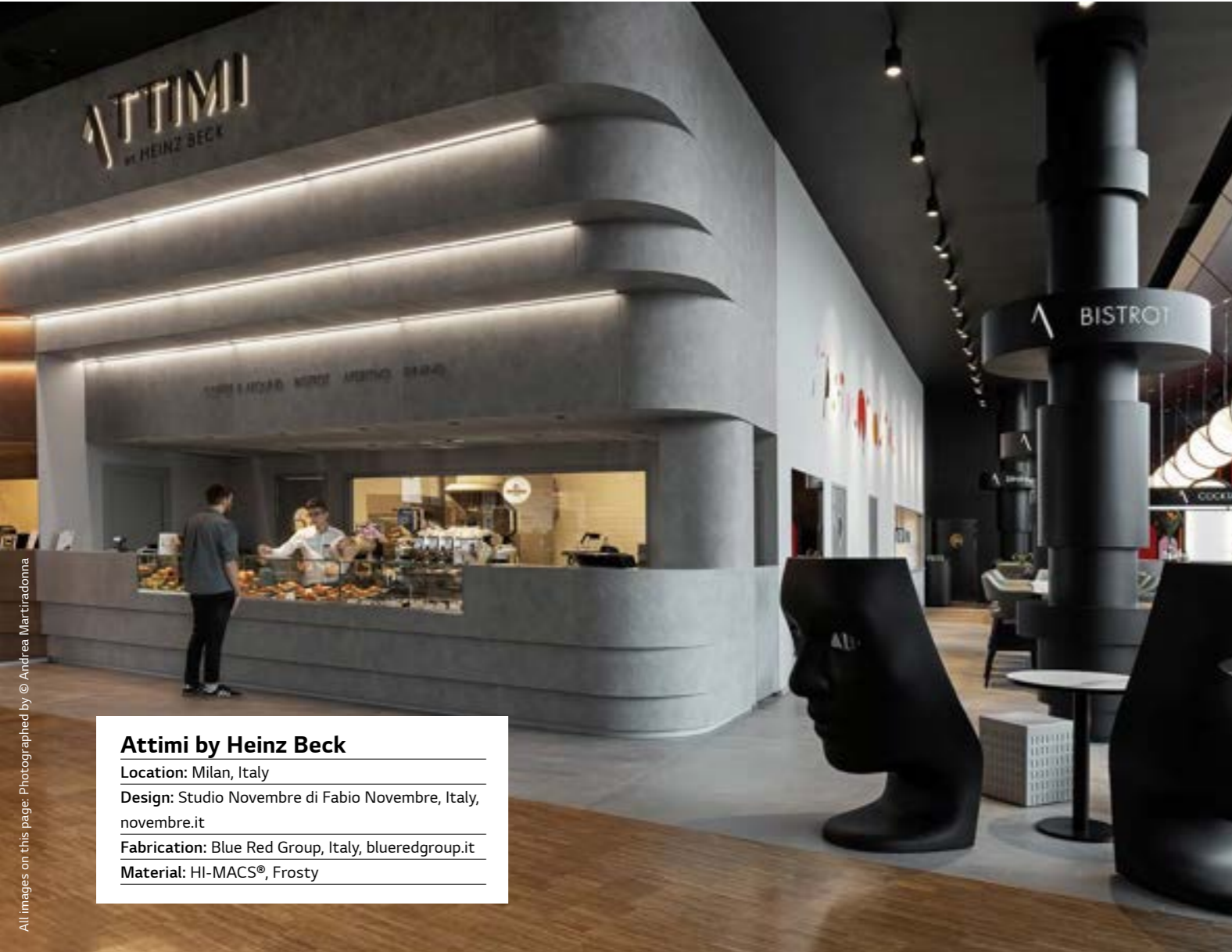


Hospitality and Gastronomy

HI-MACS® creates visual, statement features in the trendiest of bars, the most upmarket of restaurants and the most happening clubs. Especially for internationally operating hospitality chains it is good to know that LG Hausys offers a global after sales service with their network-partners.



First impressions count
The gleaming white reception desk creates a contrasting statement feature in the historical building in Eindhoven, conveying modernity and high-quality; a key message for a high-end gym facility. The object with its rising lines appears to have been cast from a single mould.



Attimi by Heinz Beck

Location: Milan, Italy

Design: Studio Novembre di Fabio Novembre, Italy, novembre.it

Fabrication: Blue Red Group, Italy, blueredgroup.it

Material: HI-MACS®, Frosty



A restaurant totally to our taste

Many architects and designers understand how to showcase our material: the bar in this Milan restaurant is designed using HI-MACS® in the colour Frosty from the Volcanics collection. Worktops and table tops are manufactured from HI-MACS® throughout.



SportCity Eindhoven

Location: Eindhoven, The Netherlands

Design: Yeh Design, The Netherlands, yeh.nl

Fabrication: justustjebbo, The Netherlands, justustjebbo.nl

HI-MACS® Supplier: Baars & Bloemhoff, The Netherlands

Material: HI-MACS®, Alpine White

Precisely milled and coloured: there are so many options to incorporate lettering and logos into the material.

All images on this doublepage: Photographed by Creativefriends



Pure sunshine
This spacious villa has been designed with an exceptional fit-out and expansive terraces and pools. HI-MACS® is used both indoors and outdoors, with the bathrooms and kitchens, the furniture in the living rooms and bedrooms, the patio tables and even the pool channel being manufactured from the tough and easy-to-clean material. Pure relaxation!

The holiday resort also relies on the durable HI-MACS® material in the outdoor areas.

Les Olivades Marrakech

Location: Marakesh, Morocco
Design: Gérard Iffrig, France
Fabrication: Plan Design, Morocco
Material: HI-MACS®, Alpine White



The high-quality ambience is achieved with the use of HI-MACS® which delivers quality, elegance and functionality.



Healthcare

Cleanliness and sterility are paramount in hospitals and laboratories and any materials used should meet the strictest quality-standards. Its internationally certified resistance to dirt, viruses, bacteria and numerous chemicals makes HI-MACS® the first material of choice in the healthcare sector.



Cubic lines on the outside, gentle curves on the inside
This graceful Doctor's surgery in Spain was designed to represent an harmonious and relaxing space, with a nod to the curves of pregnancy. The minimalistic exterior sits favorably with the pleasing interior, the curves of which are thanks to the thermoformable properties of HI-MACS®, while the visually seamless surface means the clinic has an extremely hygienic finish.



Pebble Pearl and Arctic Granite colours blend together in this reception desk.

Omagh Hospital & Primary Care Complex

Location: Omagh, Co. Tyrone, United Kingdom

Design: Andrew Murray, TODD Architects, United Kingdom, toddarch.co.uk

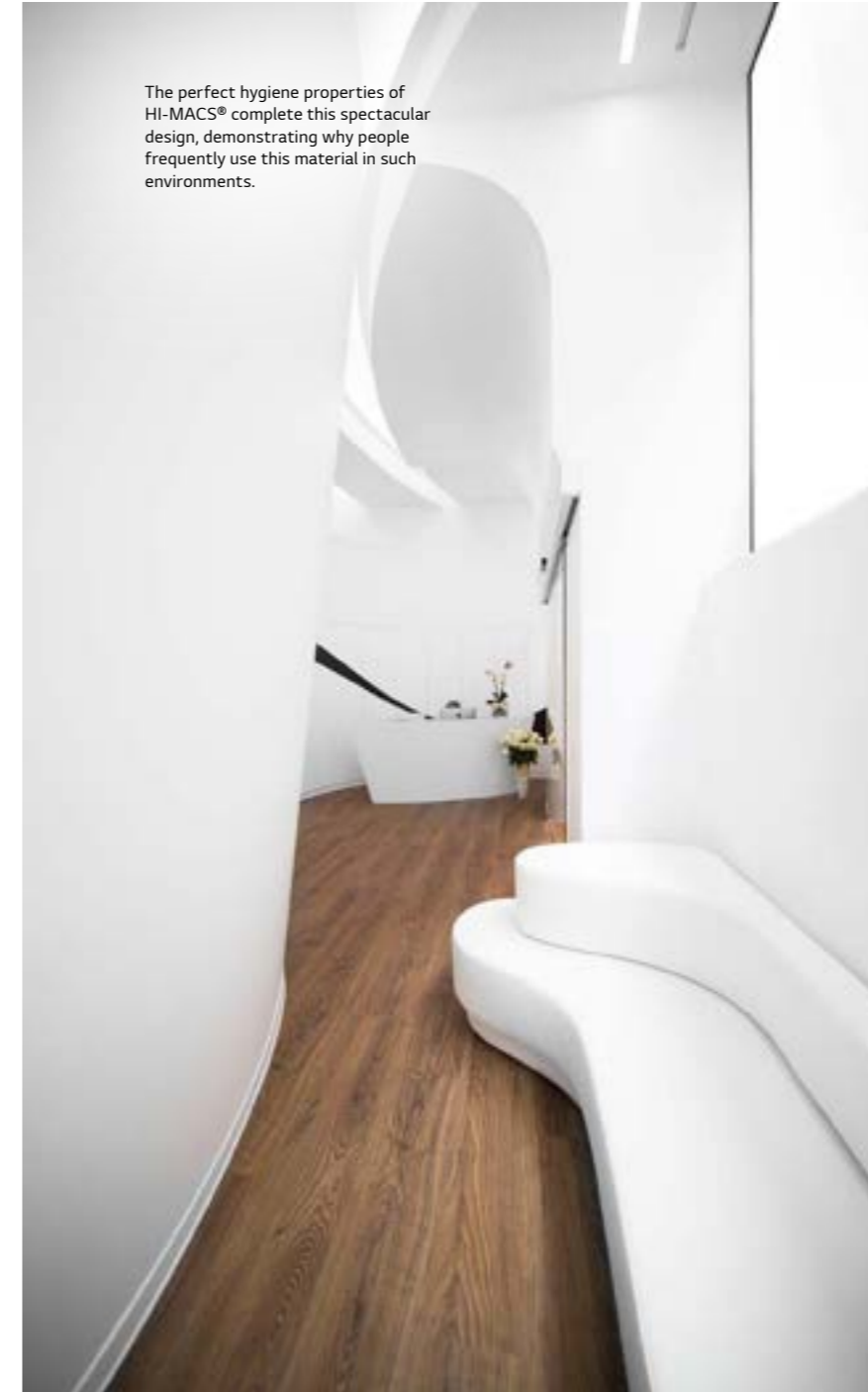
Fabrication: McLaughlin and Harvey Specialist Joinery, United Kingdom, mclh.co.uk

HI-MACS® Supplier: James Latham, United Kingdom

Material: HI-MACS®, Pebble Pearl, Arctic Granite

Matchless geometry

This counter radiates with its perfect symmetry of calm and peace: the rectangular central element provides the necessary privacy, while the lower rounded elements at the sides enable people to look in, imparting an air of friendliness. The two shades of HI-MACS® blend in this design to create a single harmonious unit.



The perfect hygiene properties of HI-MACS® complete this spectacular design, demonstrating why people frequently use this material in such environments.

Gynecological Clinic Ritmo

Location: Valencia, Spain

Design: Fran Canos Studio, Spain, francanosstudio.com

Fabrication: VF Superficies Solidas, Spain, vfaplicaciones.es

Material: HI-MACS®, Alpine White



All images on this page: Photographed by Lope Matias

Kitchen

The ingredients, as well as the material on which they are prepared, have a key role in creating a high-quality meal. HI-MACS® is a non-porous, dirt-repellent and hygienic surface, and combined with its Thermalcure-technology, results in the best surface-quality for working with food and everyday household chemicals.



Private kitchen Sainte-Victoire

Location: Aix-en-provence, France
Design: Charlotte Raynaud Hegenbart, France, charlotteraynaud.com
Fabrication: Hegenbart, France, hegenbart.fr
HI-MACS® Supplier: Mobistrat, France
Material: HI-MACS®, Crystal Beige

Volare by Aran

Location: Atri, Italy
Design: Aran World SRL, Italy, www.arancucine.it
Fabrication: Dform Srl, Italy, dform.it
HI-MACS® Supplier: Derve Srl, Italy
Material: HI-MACS®, Alpine White

This kitchen worktop has 100% HI-MACS®-DNA. The sweeping design brings the work surface to life, giving it a unique appearance, with the seamlessly integrated, gently upwardly curving breakfast bar exuding the benefits of its seamless workmanship and thermoforming. The result: a highly functional, easy-clean and yet spectacular kitchen.



The recessed mirror under the counter creates an illusion of weightlessness
The worktop and kitchen island are both made of Crystal Beige HI-MACS®. However, it is the kitchen island in particular that grabs the attention: the solid material has an almost feather-light appearance here as an almost imperceptible mirror visually reflects the floor underneath the work surface.



The Steel Grey colour blends perfectly with the warm grey on-trend colours of contemporary kitchen design.

Villa in the outskirts of Prague

Location: Prague Troja, Czech Republic
Design: Alelier Labor13, Czech Republic, labor13.cz
Fabrication: A.M.O.S. DESIGN, Czech Republic, amosdesign.cz
Material: HI-MACS®, Steel Grey

Like an anvil in a metal workshop
The systematic concave design is as simple as it is breath-taking. The solid base of the kitchen island gives it a strong, stable appearance, while the sharp edge at the top lends it a delicate and lightweight look.

Living Spaces

Any materials used within your home should be selected with utmost care as you will be using them for many years. The exclusive 15-year warranty with a Quality Club fabricator ensures that your satisfaction is guaranteed.



For everyone who loves colour. The Lucent Collection offers a range of attractive pastel shades, which vibrantly play with the light.



The Lucent Sapphire worktop has a fresh appearance while also exuding a feeling of calm and tranquillity.



Big and colourful in Japan
It is not surprising that this brightly coloured apartment, which its owners lovingly call their "Watermelon Flat" is located in the Japanese city of Tokyo. However a surprising fact is that this installation scheme was designed in England. It is HI-MACS® that makes this playful interplay of form and colour possible: the most colourful designs can be realised reliably and with perfect workmanship using the comprehensive colour range featuring countless different shades.

Nagatacho Flat

Location: Tokyo, Japan

Design: Adam Nathaniel Furman, United Kingdom, adamnathanielfurman.com

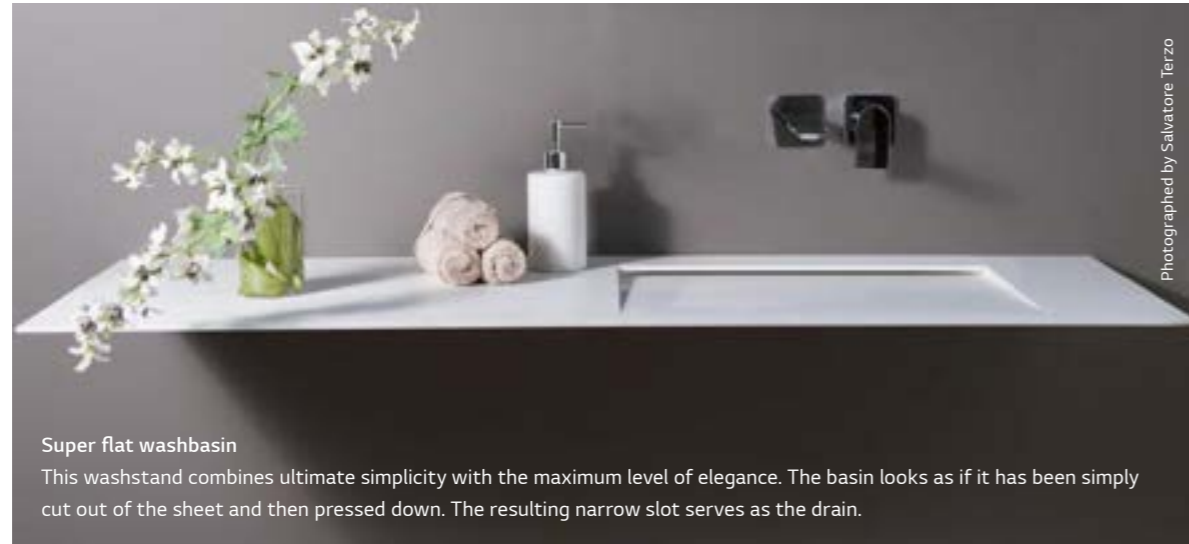
Material: HI-MACS®, Sapphire and Ruby

Bathroom

Thanks to its waterproof surface and the extensive range of high-quality washbasins, HI-MACS® is becoming increasingly popular in the bathroom. The warm, pleasing feel of the material, coupled with its ease of care means HI-MACS® is simply perfect.

NOVE

Location: Palermo, Italy
Design: Francesca Biundo, Massimiliano Masellis, Marta Marasá, Italy
Fabrication: Officine Legno di Salluzzo Francesco, Italy
HI-MACS® Supplier: Primek di Paola Provenzano, Italy
Material: HI-MACS®, Alpine White



Super flat washbasin

This washstand combines ultimate simplicity with the maximum level of elegance. The basin looks as if it has been simply cut out of the sheet and then pressed down. The resulting narrow slot serves as the drain.

The Splash Lab

Location: London, United Kingdom
Design: John Robertson Architects London, United Kingdom, jra.co.uk
Fabrication: The Splash Lab, United Kingdom, thesplashlab.com
HI-MACS® Supplier: James Latham, United Kingdom
Material: HI-MACS®, Steel Concrete



As if hewn from stone

This remarkable washbasin made of Steel Concrete HI-MACS® is extremely slim and space-saving, while at the same time has a really solid appearance. The cubic sinks are manufactured from sheet material, with a narrow drain on the left-hand side.



All images for this project: Photographed by Marius Ballasus



Nature Bathroom

Location: Beilngries, Germany
Design: Kerstin Roth / Roth Baddesign, Germany, rother-punkt.de
Fabrication: Schreinerei Thorsten Mayer, Germany, schreiner-mayer.de
HI-MACS® Supplier: Klopfer Surfaces, Germany
Material: HI-MACS®, Alpine White



Wood and HI-MACS® – the perfect match

Many materials complement each other perfectly. Here the mix of the renewable natural material and the pure white high-tech material looks good and, thanks to the hygienic properties of HI-MACS®, provides everything that a bathroom needs.

Not Only White

Design: Not Only White, The Netherlands, notonlywhite.com
Material: HI-MACS®, Alpine White, Deep Indigo, Sapphire



The washstand and accessories are "Not Only White"

The Dutch design label is simplicity itself. Using their favourite shade of Alpine White, the washstands also embody sophistication, clever details and an almost sculptural appearance. Combined with HI-MACS® accessories, such as the soap dish and toothbrush stand, this is a perfect bathroom solution.



Furniture Design and Product Design

Whether it is used for hexagonal tables with internal lighting, honeycomb-shaped shelving, engraved counters or thermoformed seating, HI-MACS® provides limitless design options and maximum material quality.



ALIA

Location: Toulouse, France
Design and Fabrication: Pierre Cabrera, France, pierre-cabrera.fr
HI-MACS® Supplier: Planacryl, France
Material: HI-MACS®, Alpine White

An organic light sculpture
The translucence and thermoforming properties of HI-MACS® form the basis for this this impressively large, unique, and sculptural lighting concept.



All images for this project: Photographed by Pierre Cabrera

Outdoor

Materials used outside are exposed to the weather all year round. This means exposure to sun and rain, snow and ice, lots of moisture and different temperatures as well as strong UV rays. HI-MACS® has passed all the required tests in a selection of colours, and has proved its outstanding qualities can master the toughest outside conditions.

Contemporary Lattice Midori & Ixchel

Location: Royan, France
Design: Atelier Kazéhana & Tuillière, France, kazehana-tuilliere.com
HI-MACS® Supplier: Planacryl, France
Material: HI-MACS®, Alpine White



All images for this project: Photographed by Julien Publie Tuillière



Design with light and shadow

The innovative Claustra range consists of individually designed paravents and partition wall systems, all made of high-grade HI-MACS®: weatherproof, solid and therefore with long-lasting beauty.

Unsquare

Design: Pierre Cabrera, France, for Bleujour company, pierre-cabrera.fr
Fabrication: Pierre Cabrera, France, pierre-cabrera.fr
HI-MACS® Supplier: Planacryl, France
Material: HI-MACS®, Alpine White

The computer that insists on white
“Unsquare” is proof that a computer can be a true design object. Thanks to the concave curved HI-MACS® surfaces, the appliance appears elegant, high-quality and robust. No need to hide this little beauty in a cupboard.



Photographed by Laurent Barranco

Lucent Knives “Seamless in Pastel”

Location: Antwerp, Belgium
Design: Natascha Van Reeth – Tasch Design, Belgium, taschdesign.com
Fabrication: Den Dam, Belgium, dendam.be
HI-MACS® Supplier: Engels Design & Decoration, Belgium
Material: HI-MACS®, Opal, Sapphire, Ruby, Emerald

Knives in HI-MACS®!
These three super-sharp cheese knives are supplied with their own cutting board: a further visual high-lightincorporating four shades from the Lucent Collection.

Poly Table

Location: Cambridgeshire, United Kingdom
Design: Profile Designs Furniture, United Kingdom, profiledesigns.co.uk
Fabrication: Superior Surfaces, United Kingdom, superiorsurfaces.co.uk
HI-MACS® Supplier: James Latham, United Kingdom,
Material: HI-MACS®, Marta Grey

The table made of many triangles
The Poly Table is a geometric inspired coffee table made of HI-MACS®: easy-clean, durable, colour-fast and therefore ideal for use indoors and outdoors.



Photographed by Profile Designs Furniture

Education

HI-MACS® extreme toughness and ease of maintenance are prerequisites to withstand everyday life in nursery schools, schools, universities and other institutions.



All images on this page: Photographed by Nick Freeman, 246 Photography

University of Manchester

Location: Manchester, United Kingdom

Design & Fabrication: Gresham Office Furniture, United Kingdom, gof.co.uk

HI-MACS® Supplier: James Latham, United Kingdom

Material: HI-MACS®, Alpine White, Naples



Perfect display, flush integrated into the table top and only visible when in operation: a kind of Conference Table 4.0.

The professors meet around the high-tech table

The desktop and vertical surfaces are manufactured in the colour Naples, while the narrow cover of the multifunctional unit in the centre of the table is Alpine White. The reason: the integrated display shines through the translucent desktop when a certain function is pressed.



Angular three-dimensionality constructed from seamlessly joined HI-MACS®: the exhibition displays of the Sheikh Abdullah al Salem Cultural Centre in Kuwait City.

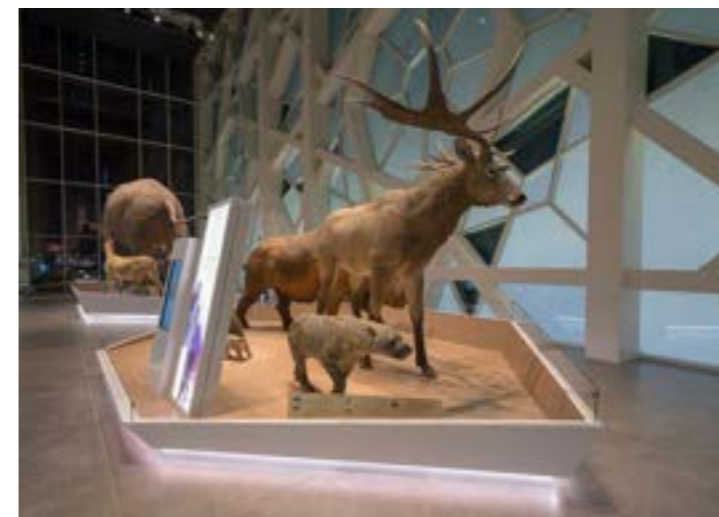
Sheikh Abdullah Al Salem Cultural Centre

Location: Salmiya – Kuwait City, Kuwait

Design: Cultural Innovations LTD, United Kingdom, culturalinnovations.com

Fabrication: Proasur, S.L, Spain, proasur.com

Material: HI-MACS®, Alpine White



Fascinating in every form

Prehistoric finds have a great fascination for the young and old. The angular bases on which the sometime huge exhibits are presented are spectacular design objects in themselves: the bases are illuminated and emit a mystically shimmering light onto the floor. Illuminated graphics have also been worked into areas of the material.

Airport

Desks, counters and shelving at airports are exposed to extremely heavy and constant use. It is here that the perfect finish of HI-MACS® comes into its own – easy to clean and extremely robust, thanks to its innovative Thermalcure-technology.

All images on this page: © Deutsche Lufthansa AG, Photographer: Christian Laukemper



Milan Airport Lufthansa Lounge

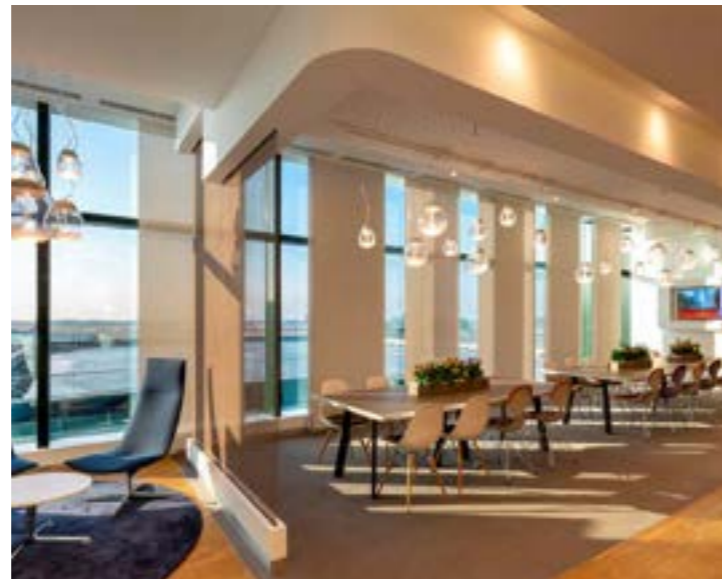
Location: Milan, Italy

Design: Kitzig Interior Design GmbH,
Bochum, kitzig.com

Fabrication: Baierl&Demmelhuber
Innenausbau GmbH, Töging,
Germany

Material: HI-MACS®, Alpine White
and Lunar Sand

Its durability and ease of care mean that HI-MACS® always creates a good first impression.



Quality and style are evident in the perfect detailing. Lufthansa works with HI-MACS®. The German airline relies on the elegance and functionality of the material at Frankfurt Airport and also more recently at Milan's Malpensa Airport. The reception desks, library shelves, all standing tables, zone partitions attached to the ceiling and the catering units are all made of HI-MACS®.

Marine Industry

A new composition of HI-MACS® from the Hightech laboratories of LG has been developed for use in ship-building. HI-MACS® FR, has been awarded the IMO certificate module B and D in compliance with the Marine Equipment Directive for its fire resistant and fire-retardant properties.



Photographed by Sebastian Scheuerecker

MS Amadea

Location: Hamburg, Germany

Design: Phoenix Reisen GmbH, Germany, phoenixreisen.com

Fabrication: 2 Pier GmbH – Holztec Innenausbau GmbH, Germany,
2pier.de – tb-berndt.de

HI-MACS® Supplier: Klöpfer Surfaces, Germany

Material: HI-MACS®, Alpine White, Arctic Granite

At home on the high seas

HI-MACS® brings class and spaciousness to the bathroom design of the ship's cabins on the MS Amadea. The choice of a material makes a very clear statement about how one views quality.

All images for this project: Photographed by Evo Yachts - Studio Borlenghi



Total comfort at full speed ahead
Anyone who loves the sea understands what is needed in stormy weather: lightweight, durable, easy-clean and highly functional units you can rely on. Like on this Italian yacht, where all the worktops in the bathroom and kitchen are manufactured from HI-MACS®.



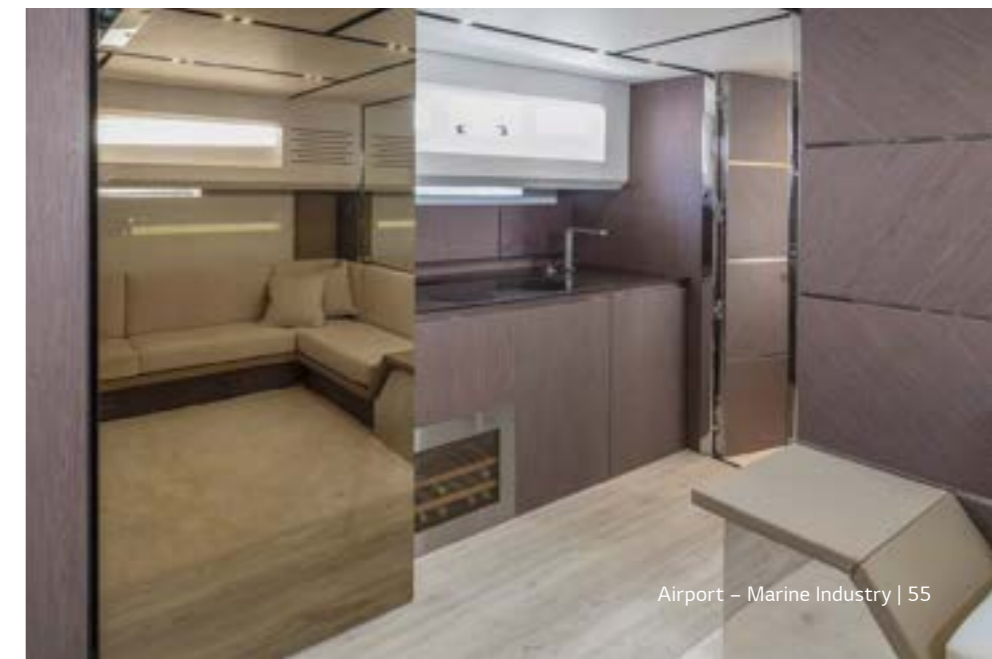
Evo R6

Location: Naples, Italy

Design: Valerio Rivellini, Italy, rivellini.it

HI-MACS® Supplier: Luigi Strumolo
S.p.A., Italy.

Material: HI-MACS®, Alpine White,
Coffee Brown



Best of the Last Decade

In recent years HI-MACS® has been specified more and more by architects and designers – only the best quality can convince demanding clientele like these. Thanks to their ability and talent and to the superior quality of material and fabrication some masterpieces have been achieved with HI-MACS®. Although not recent, they still inspire users and owners. A selection can be found here.



Händel House

Location: Halle, Germany

Design: Gerhards & Glücker, Germany, gerhardsgluecker.com

Fabrication: Möbel Damm, moebel-damm.de

Material: HI-MACS®, Arctic White

Baroque forms to honour a baroque musician

This building to honour the great musician Georg Friedrich Händel transitions from an understated exhibition and reception area to an opulent Baroque hall. HI-MACS® links and enables both: the ornamental splendour as well as the subtle play of lights.

Hotel Puerta America

Location: Madrid, Spain

Design: from left to right: Christian Liaigre, France – Ron Arad, UK – Zaha Hadid Architects, UK – christian-liaigre.fr, ronrad.co.uk, zaha-hadid.com

Material: HI-MACS®, Alpine White, Black, Fiery Red

19 well-known architects and designers designed this hotel – naturally using HI-MACS®

The result of their work is simply breathtaking, with every room being a veritable stand-alone masterpiece. HI-MACS® was with them every step of the way – inspiring the designers to create their most daring designs.



Atlas Swimming Pool

Location: Paris, France

Design: Yoonseux Architectes, France, yoonseux.com

Fabrication: ASKA Interior, France, aska-interior.com

Material: HI-MACS® Arctic White

Water and HI-MACS® do mix

This indoor swimming pool in a Parisian school was designed mainly with HI-MACS®: parts of the exterior walls, the geometrical relief on the interior walls, the non-slip floor in the shower area and many individual items of furniture were all created in HI-MACS® Arctic White. Its perfect hygiene and ultra-flexible form are important properties of the material, which also gives the space a unique atmosphere.



Raiffeisen Bank Zürich

Location: Zurich, Switzerland

Design: NAU Architecture, Switzerland, Drexler Guinand Jauslin Architekten, Switzerland, nau.coop, dgj.ch

Fabrication: Wallcovering patterns design: ROK, Rippmann Oesterle Knauss, Switzerland, rok-office.com – Wallcovering and joinery: Glaeser Baden, Switzerland, glaeser.ch

Material: HI-MACS®, Alpine White

HI-MACS® helps create a personal vision

The Raiffeisen Bank in Zurich displays the portraits of former prominent residents that stand out thanks to the intricate cutting of triangles of different sizes and the spartan overall interior architectural design.



Sokcho House in White

Location: Inheung-ri, Toseong-myeon, Goseong-gun, Gangwon-do, South Korea

Design: Woo-jin, LIM AEV Architectures, aev-architectures.com

Material: HI-MACS®, Alpine White

The house that plays with light

HI-MACS® has a sensuous way of dealing with light: When used as a facade the material provides great aesthetic properties. The light is absorbed or reflected, depending upon the intensity and angle of incidence, and gives the Sokcho Housing in Alpine White a mystical feel.



We have a strong partner network for your most creative ideas.

Architects and designers have awe-inspiring ideas. And exceptional craftsmen transform them into reality using HI-MACS®.

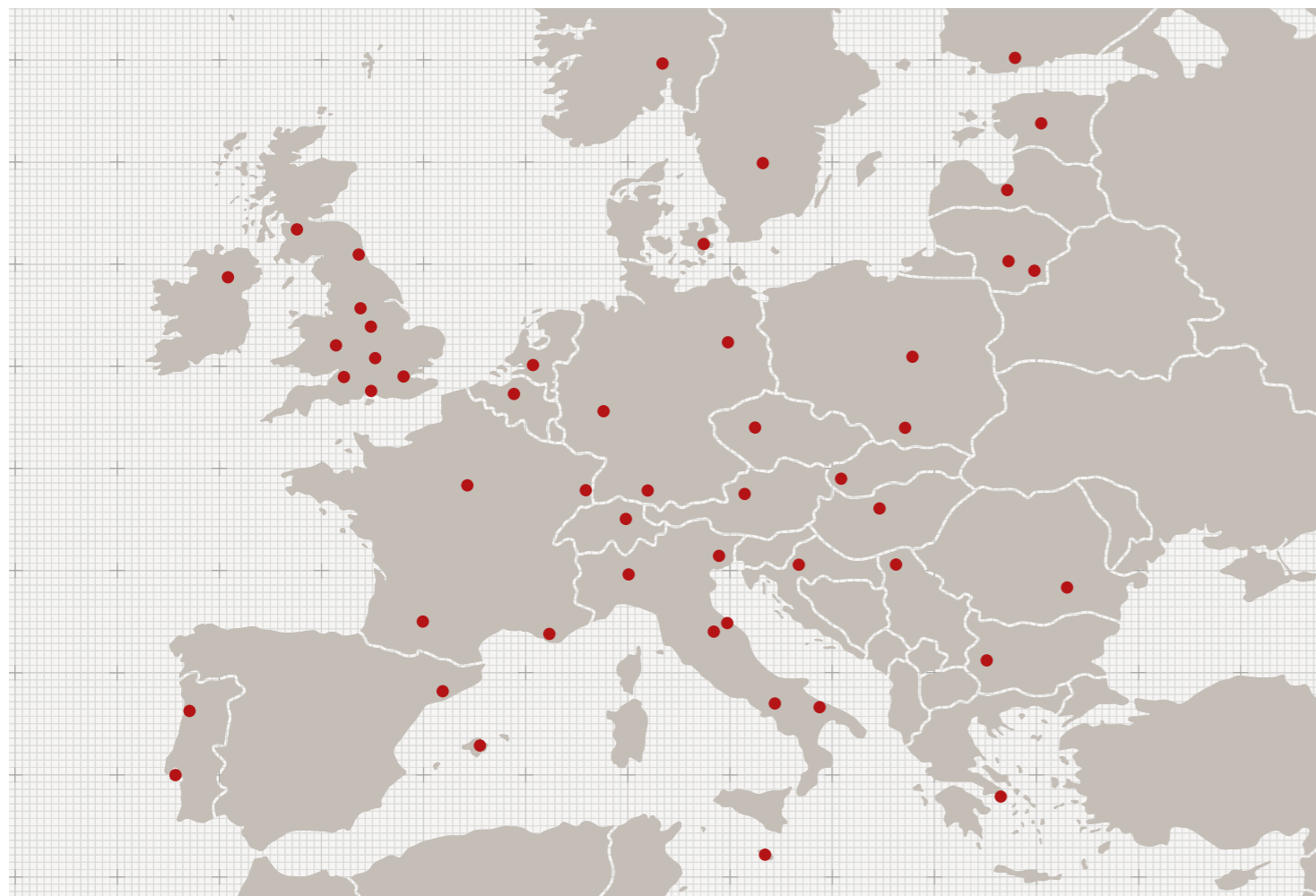
Contact us to find our network of exclusive distributors serving more than 5.000 fabricators across Europe and our numerous Quality Club Training Centres. This is our strategy to guarantee the best quality at all levels.

We can also offer you the security of our global LG After-sales Service with our experienced HI-MACS® experts all around the world.

All contact details of our network can be found at

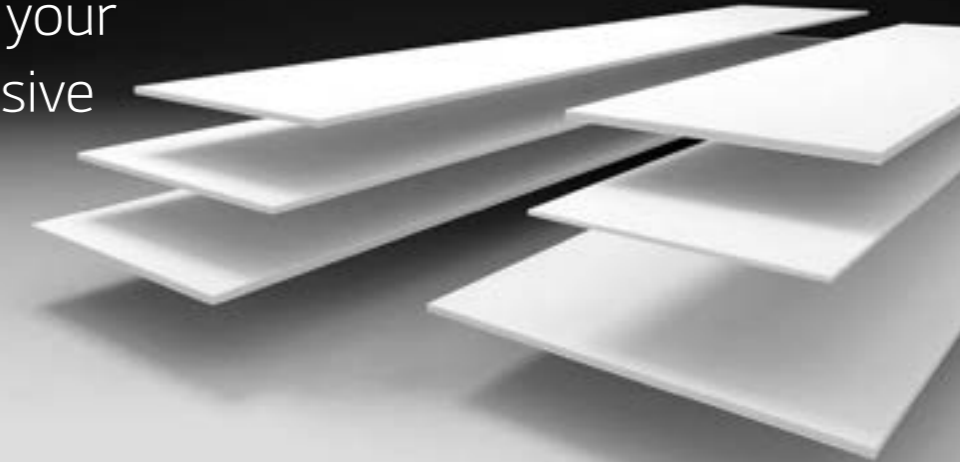
himacs.eu

Because Quality Wins.



PRODUCT SPECIFICATION

The perfect basis for your ideas: our comprehensive range of sheets.



Standard Formats

760 x 2490 mm

910 x 2490 mm

760 x 3000 mm

1350 x 3000 mm

760 x 3680 mm

910 x 3680 mm

1350 x 3680 mm

1520 x 3680 mm

Sheet Material

- HI-MACS® is available in different thicknesses, formats and sizes. Perfect for maximum cutting and minimal costs. However, not all colours are available in every thickness. *See the table for availability below.*
- HI-MACS® sheet material is available in thicknesses of 4 mm, 6 mm, 9 mm, 12 mm and 20 mm as well as the corresponding sheet formats.

- HI-MACS® is also available in special formulations:
- HI-MACS Exteria®
 - HI-MACS® FR – Low flammability, ETA Certified, IMO Certified.
 - HI-MACS® – Advanced UV resistance, CSTB Certified.
 - HI-MACS® Ultra-Thermoforming: Advanced Thermoforming, up to 6 mm internal radius.
 - HI-MACS® Intense-Ultra: The best of two worlds – Ultra-Thermoforming and Intense Colour Tecnology
- For more information, see page 65.*

Dimensions – Sheet material

Standard Format

Standard formats are available on stock, for specific thicknesses per colour, please refer to the colour chart on page 62, or contact your sales representative.

SHEET THICKNESS IN MM	SHEET WIDTH IN MM	SHEET LENGTH IN MM
4	1350	3000 *
	760	2490
6	910	2490 *
	1350	3680 *
9	760	3680
	910	3680 *
	1350	3680 *
12	760	3680
	910	3680 *
	1350	3680 *
	1520	3680 *
20	760	3000

Ultra-Thermoforming Format

SHEET THICKNESS IN MM	SHEET WIDTH IN MM	SHEET LENGTH IN MM
12	760	3680 **
	910	
	930	
	1520	

Special Format

Special format available on special request, minimum quantities apply. For further special formats, please contact your sales representative.

SHEET THICKNESS IN MM	SHEET WIDTH IN MM	SHEET LENGTH IN MM
4 ****	1220	2490
		3090
		3680
6 ****	1350	2490
		3090
		3680
9 ****	1520	2490
		3090
12 ***	910	2490
		3680
		3680
6 *****	910	2490
9 *****	910	3680
12 *****	910	3680
20 ***	760	3000
		3680

* Only available in S028 Alpine White.
 ** Only available in S928 Alpine White.
 *** Available in all colours except for Eden Plus, Marmo Collection and M551 Chic Concrete, M552 Shadow Concrete and M553 Ebony Concrete.
 **** Available in all Solid colours
 ***** Only available in S006 Arctic White.

Chemical and Technical Information

Over 20 years research and development by LG engineers, means that we are producing high-tech quality products.

Thanks to the new Thermalcure-technology, developed by LG, HI-MACS® performs better than the standard in Solid Surface.

For example you save precious time because it is easier to sand.

And thanks to the Thermalcure-technology used during production, HI-MACS® has excellent heat-resistance.

Chemical resistance

HI-MACS® is a fully homogenous material with no pores and is thus simple and easy to clean.

CLASS	STAINING AGENT	APPLICATION TIME	EVALUATION OF G002 CHANGES	EVALUATION OF S028 CHANGES
GROUP 1	Water	16h – 24h	5 to 4	5 to 4
	Toothpaste			
	Hand cream			
	Natural fruit and vegetable juice			
	Lemonade and fruit drinks			
	Meats and sausages			
	Animal and vegetable fats and oils			
	Yeast suspension in water			
	Salt (NaCl) solutions			
	Mustard			
	Lyes, soap solutions			
	Cleaning solution			
	Alcoholic beverages			
	Phenol and chloramine-T disinfectants			
Citric acid (10% solution)				
GROUP 2	Coffee (120gr coffee per ltr. water)	16h	5	4 to 5
	Black tea (9gr tea per ltr. water)			
	Milk (all types)			
	Cola beverages			
	Wine vinegar			
	Alkaline-based cleaning agents (10% in water)			
	Hydrogen peroxide (3% solution)			
	Ammonia (10% solution of commercial concentrate)			
	Lipstick			
	Water colours			
	Laundry marking inks			
	Ball point inks			
	*Sodium hydroxide (25% solution)			
	*Hydrogen peroxide (30% solution)			
*Acetone				
Trichlorathane				
Other organic solvents				
Concentrated vinegar (30% acetic acid)				
Bleaching agents and sanitary cleaners containing them				
Hydrochloric acid based cleaning agents				
Tincture of iodine				
Boric acid				
Lacquers and adhesives (except fast-curing materials)				
Amidosulfonic acid descaling agents (≤10% solution)				
Nail varnish				
Nail varnish remover				
Stain or paint remover based on organic solvents				
GROUP 4	*Acetic acid (5% solution)	20min.	5	4

Tests carried out in accordance to EN ISO 19712 for Solid Surface material, please see table (left) for results.



Evaluation

RATING LEVEL	DESCRIPTION
Rating 5	No visible change
Rating 4	Slight change in gloss and/or colour, only visible at certain viewing angles
Rating 3	Moderate change in gloss and/or colour
Rating 2	Marked change in gloss and/or colour
Rating 1	Surface distortion and/or blistering

a = Acids and alkalis, in concentrations stronger than those shown in group 3, which can be contained in commercial cleaning agents, can cause surface damage or marking, even with very short contact times. Any spillage of such materials should be washed off immediately.

Technical data sheet

HI-MACS® is extremely resistant to dirt and wear and tear, so that you can enjoy many years' peace of mind with the outstanding quality of your new product.

SPECIFICATION	UNIT	RESULT SOLIDS	RESULT GRANITE	TEST METHODS
Flexural-E-modulus	MPa	8900	7730	DIN EN ISO 178
Flexural strength	MPa	70.1	64.3	ASTM D638
Breaking elongation	%	1	1.1	DIN EN ISO 178
Tensile strength	MPa	69.5	56.3	DIN EN ISO 527
Density	g/cm ³ kg/m ³	1.75 1750	1.65 1650	ISO 1183 ISO 1183
Ball indentation hardness	N/mm ²	257	239	DIN EN ISO 2039-1
Mohs hardness		2 to 3	2 to 3	EN 101
Pencil hardness		>9H	>9H	ISO 15184
Water absorption weight strength/thickness		<0,1% <0,1%	<0,1% <0,1%	DIN EN 438 Part 12
Impact resistance impactor drop ball test (fall height)	N mm	≥25 ≥1500	≥25 ≥1500	E DIN EN 438, 02/02 Part 2/20 E DIN EN 438, 02/02 Part 2/21
Slip resistance		>0,32 – 0,9		GMG100 (replaces R9)
Slip resistance		angle of acceptance of more than 10° to 19° = R10		DIN 51130
Climate change resistance	°C	≥0,05	≥0,05	AMK
Dry heat (pan base)	°C	≥100 (7C)		DIN 68 861, Part 7, 04-'85
Damp heat (pan base)	°C	≥100 (7C)		DIN 68 861, Part 8, 04-'85
Temperature change resistance	°C	no change		UNI 9429
Resistance to cigarette burns		6C	6B	DIN 68 861, Part 6, 11-'82
Scratch resistance		4D	4B	DIN 68 861, Part 4, 11-'81
Electrostatics Conductivity	>1x10 ¹² Ω	insulating non-conductive		DIN IEC 1340-4-1, 04-'92 EN 61340-5-1
Thermal conductivity	W/mK	0.636	0.55	DIN EN 12664
Thermal resistance	m ² K/W	0.038	0.045	DIN EN 12664
Thermal Expansion Coefficient for Standard HI-MACS® Products	mm/mK m/m/°C	0.048 48 x 10 ⁻⁶	0.055	DIN EN 14581
Water vapor transmission properties – diffusion resistance factor	μ	18607	16150	DIN EN ISO 12572
Dimensional change by change in relative humidity length thickness mass	% % %	-0.03 0.06 0.05	-0.02 0.03 0.05	DIN EN 318, edit. 5, 1998
Resistance to boiling water increase in weight increase in thickness	% %	<0,1 <0,1	>0,1 <0,1	E DIN EN 438, 02/02 Part 2/12
Light fastness (Xenon)	scale 0 – 10	better than 6	better than 6	DIN 53 387, 04-'89
Food tolerance		suitable for all colours		LMBG § 31
Hygiene		suitable	suitable	LGA Hygiene Certificate

SPECIFICATION / SUBJECT	MATERIAL THICKNESS	RESULT	PRODUCT TESTED	TEST METHOD	
Fire Classification	12 mm	B1	HI-MACS® colour range** S928, M551, G554	DIN 4102	
		B1	S028 (standard)	DIN 4102 / ABP	
		M1	S728, S828, S028, T017, VW01, W001	NF P92-501	
	12 mm plus fibre cement board	B - s1 - d0	HI-MACS® colour range** (2007)	EN 13501-1	
		12 mm	B - s1 - d0	HI-MACS® colour range** (2014)	EN 13501-1
			B - s1 - d0	S728 CE MED	EN 13501-1 / SBI
		C - s1 - d0	S928	EN 13501-1	
		passed	S028 (standard)	DIN 5510	
		passed R1/HZ3	S728 CE MED	EN 45545	
		IMO certified	S728 CE MED	Module B & Module D	
HI-MACS Exteria®	12 mm	ETA	S728	DIBT	
		Avis Technique	S828	CSTB	

* Not currently applicable to Strato, Ultra Thermoforming and Intense Ultra.
** Products tested in the year 2007 and 2014: Alpine White, Fiery Red & Black.

Colours

Colours are key in design. Elegant Alpine White, warm Toffee Brown or mystical Cima. We have virtually any colour you could wish for.

Extra service on demand

If needed, LG Hausys Europe can produce different dimensions and bespoke colours. To learn more about the conditions, please contact us at himacs.eu



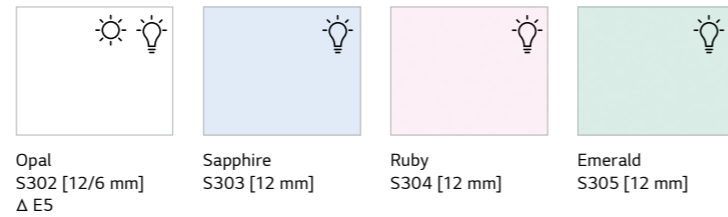
Strato

The Strato Collection enhances the HI-MACS® colour range with brand new design possibilities: the distinctive lines create geometry through its natural appearance and subtle look.



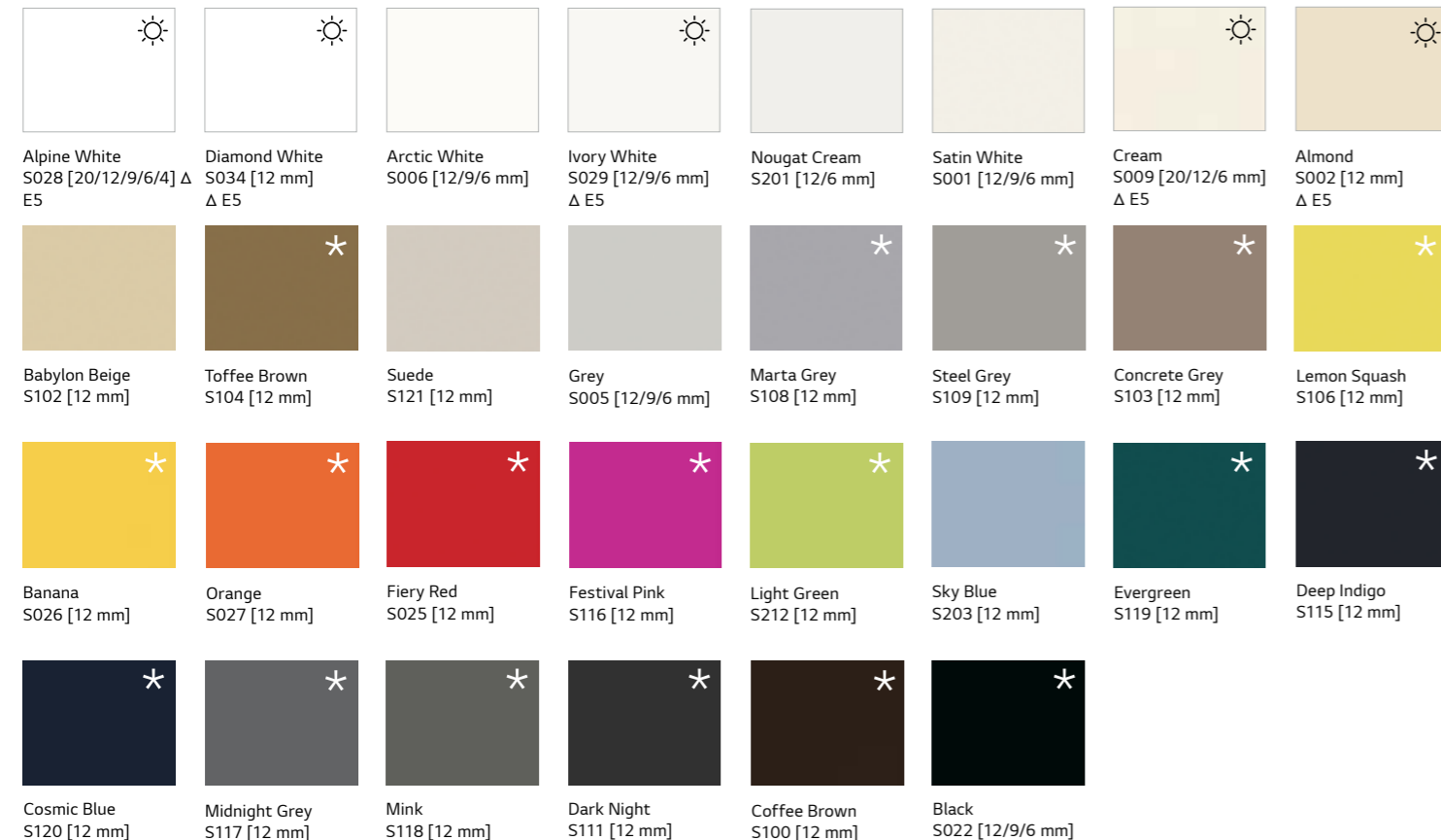
Lucent

When combined with precisely positioned light sources, the translucent pastel shades become transformed into dramatic design "highlights".



Solids

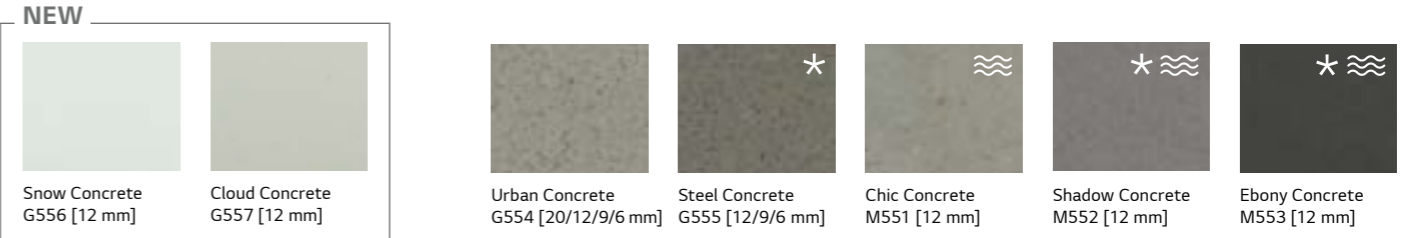
From elegant to extravagant, classic to ultra-contemporary.



20 mm: Colours indicated above are available on stock. Other colours are available on special request except for Chic Concrete, Shadow Concrete, Ebony Concrete and Marmo Collection. Minimum quantities order apply.

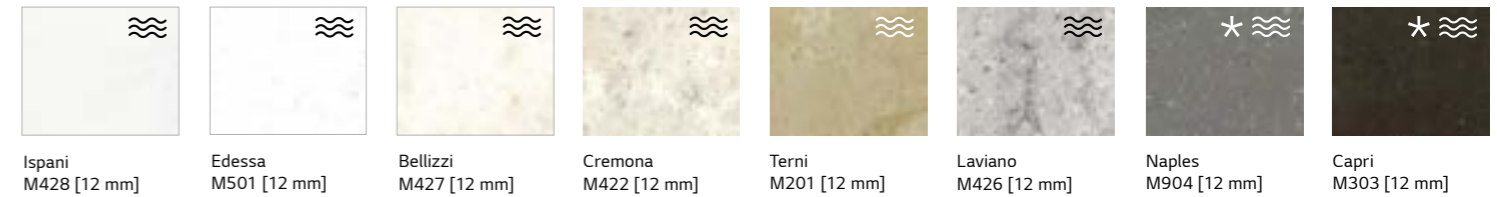
Concrete Collection

Warm tone, concrete-like finishes are now available in the solid surface material, providing completely new opportunities for architects and designers.



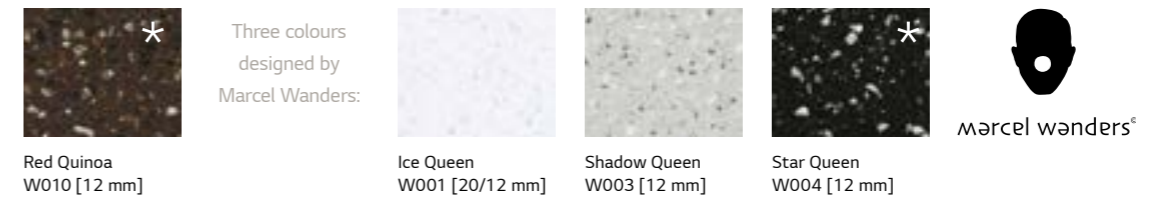
Marmo

Captivating random veined texture, reminiscent of marble.



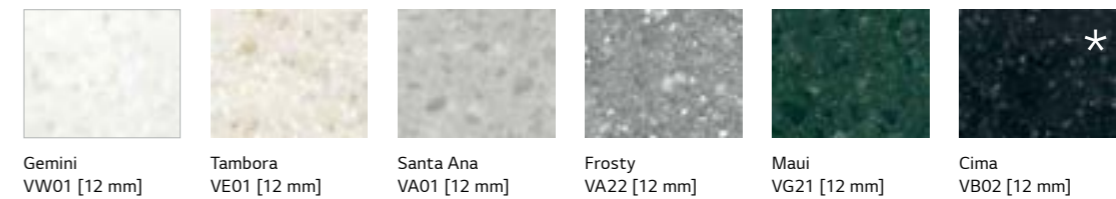
Lucia

Natural trendy colours characterised by linear-edged, midsize particles: three of these are designed by Dutch Star Designer, Marcel Wanders.



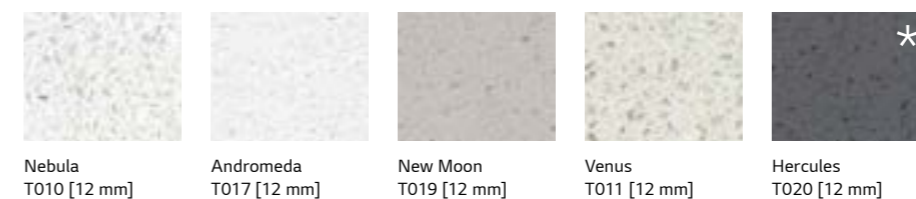
Volcanics

Full of depth and mysticism, akin to a precious natural stone but with all of the advantages of "Natural Acrylic Stone™".



Aster

With transparent grains and mother of pearl shimmer.



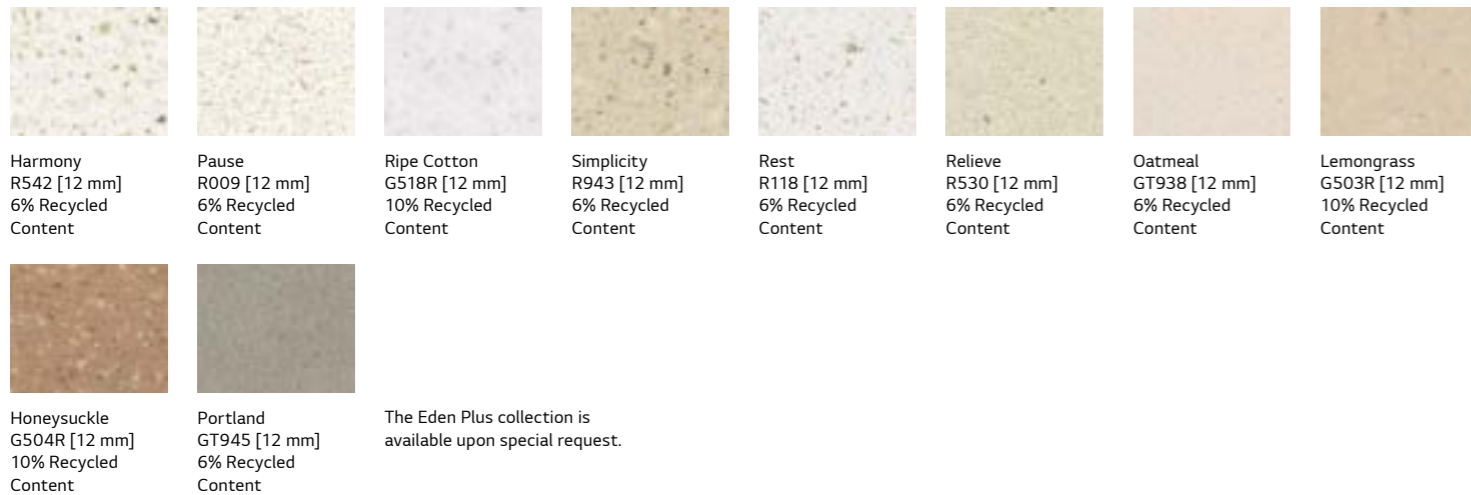
Granite, Sparkle, Quartz, Sand & Pearl

A huge selection of textures and colours. Natural, elegant and perfect in combination.



Eden Plus

A one-of-a-kind palette with warm natural shades and various grain sizes. What makes the collection unique: it contains a minimum of 6% or 10% of SCS certified pre-consumer recycled content.



Scoring eco-credits helps your project and the environment

Leadership in Energy and Environmental Design (LEED) is a widely used, voluntary system for certifying the high performance of buildings from the US Green Building Council (USGBC). LEED certifies buildings using a credit system. The use of HI-MACS® contributes towards satisfying the EQ Credit for Low-emitting Materials in the Indoor Environmental Quality (EQ) category.

★ The basic HI-MACS® material is identical for every colour but it is important to note that darker and more heavily pigmented colours will show dust, scratches, haziness, marks left by hard water and other ordinary wear and tear more noticeably than lighter textured colours. Therefore colours marked with a * are less suitable for applications that are exposed to extensive surface contact such as worktops located in heavy traffic area.

There may be deviations between the illustrated and actual colours owing to printing techniques. To receive the detailed colour range, please contact us at himacs.eu.

✧ Some HI-MACS® colours are particularly suitable for outdoor applications because of their good UV-resistance. HI-MACS® offers a 10 Year Warranty on colours' UV resistance and loss of gloss over 40%, 10 Year Warranty on colour leaching and 20 Year Warranty

HI-MACS® Eden Plus products can contribute to:

- MR BPDO – Environmental Product Declaration – Option 1: Environmental Product Declaration.
- MR BPDO – Sourcing of Raw Materials – Option 1: Raw Material Source and Extraction Reporting
- MR BPDO – Material Ingredients – Option 2: Material Ingredient Optimization
- MR BPDO – Material Ingredients – Option 3: Supply Chain Optimization
- EQ Credit: Low-Emitting Materials

on colour peeling, swelling or delaminating. The warranty is applicable after the first installation and is only valid for the sheet material; adhesives are excluded. The conditions for this warranty are based on practical experience and on-going tests.

≈ Marmo is a randomly veined product, specific fabrication guidelines need to be followed. Ask your sales partner for more information or visit himacs.eu.

💡 Lucent colours have a higher level of translucency, more evident when combined with light sources.

✧ Colours with this mark have a semi-translucent effect, evident when combined with light sources.

HI-MACS® ADVANCED SERIES

The HI-MACS® sheet range for special applications

The ability to use HI-MACS® in high-quality interior design is growing thanks to our wide range special application sheets. Projects with special tendering criteria and challenging design requirements can now be considered.

HI-MACS® FR – Minimal flammability

The HI-MACS® FR quality with reduced flammability is currently available in Alpine White S728 from the Solid Collection. HI-MACS® FR has the fire protection classification "B-s1-d0" according to EN 13501 (Single Burning Item test (SBI test))*.

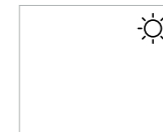
Fixed in place with KEIL anchors and a BWM construction, the HI-MACS® façade in S728 – Alpine White successfully passed the ETA tests (European Technical Agreement).



Alpine White S728 [12 mm] Δ E5

HI-MACS® S828 – Advanced UV

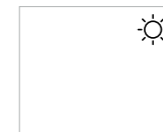
HI-MACS® S828 (Alpine White) is the new exterior formulation offering better UV resistance, which is particularly important when the façade is exposed to high levels of sunlight. It meets all requirements of the categories of Avis Technique and CSTB. In addition the formulation achieved FR in M1 France.



Alpine White S828 [12 mm]

HI-MACS® Ultra-Thermoforming

HI-MACS® Ultra Thermoforming sheets are currently available in Alpine White S928 from the Solid Collection. For more information on the design possibilities of HI-MACS® Ultra Thermoforming products, see page 20.



Alpine White S928 [12 mm]

HI-MACS® Intense Ultra

The brand new HI-MACS® Intense Ultra is a revolution for the Solid Surface market which opens new possibilities for surface design. The aptly named Intense, which is a brand new material formulation, gives a powerful and remarkable performance. The product range combines the characteristics from two disparate worlds: Intense Colour Technology and Ultra-Thermoforming.



Intense Ultra Grey S923U [12 mm]



Intense Ultra Dark Grey S924U [12 mm]



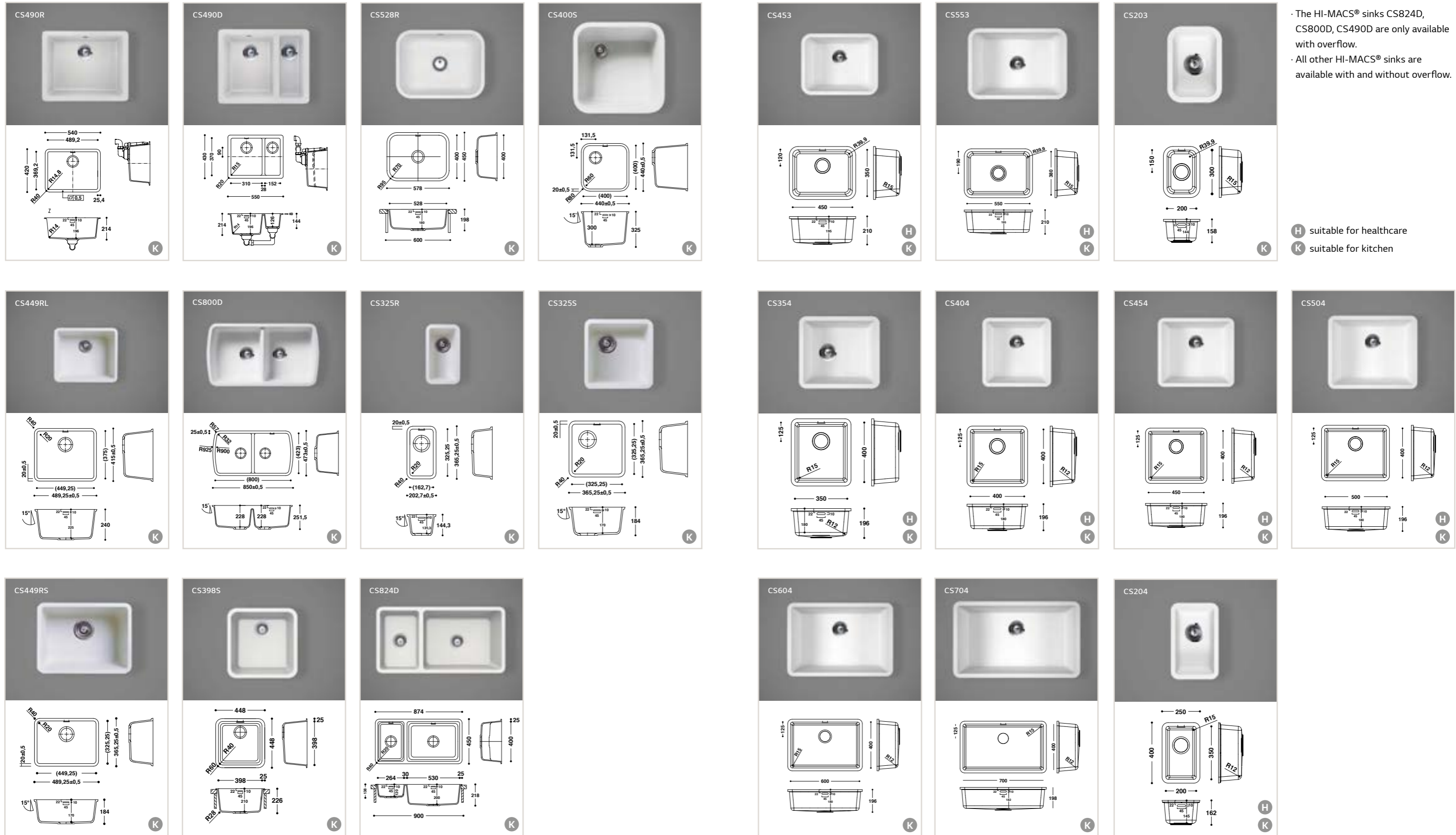
Intense Ultra Black S922U [12 mm]

Sinks.

Spacious and elegant.

HI-MACS® Sinks for kitchen and healthcare applications

Spaciousness, durability and hygiene are all key quality features when choosing a sink for the kitchen or healthcare facility. The top quality models in the HI-MACS® range offer it all. These coordinated sinks are installed as undermounted creating extremely hygienic sink areas. Special custom-made creations are also an option.



- The HI-MACS® sinks CS824D, CS800D, CS490D are only available with overflow.
- All other HI-MACS® sinks are available with and without overflow.

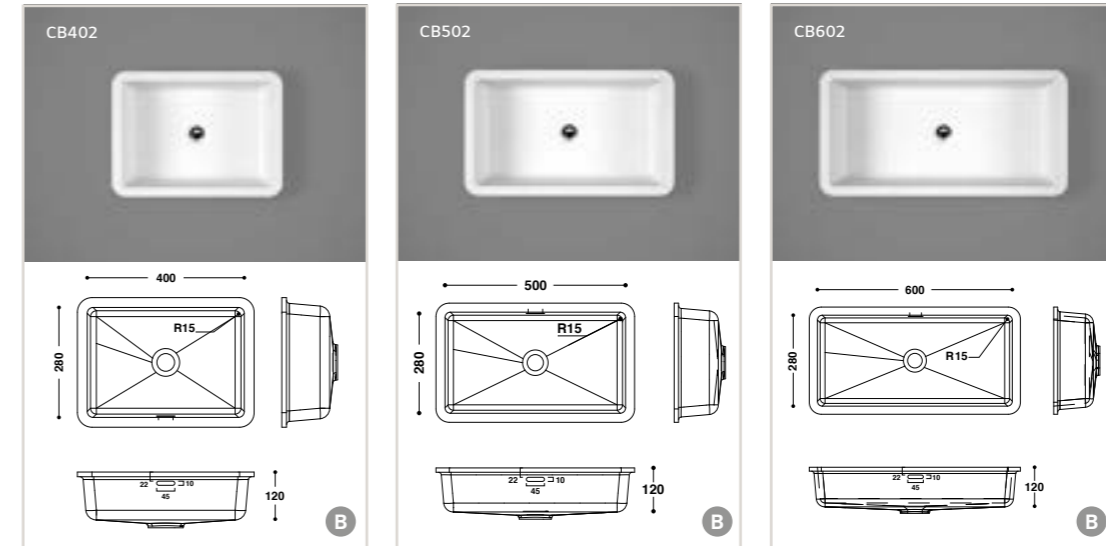
H suitable for healthcare
K suitable for kitchen

Basins. Best design for the bathroom.



HI-MACS® Basins for the bathroom

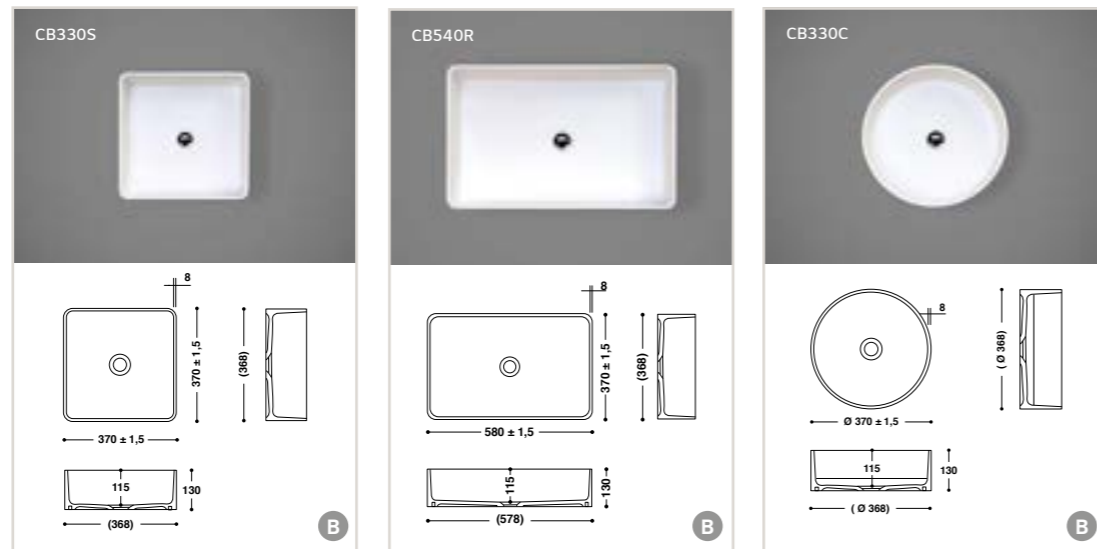
Rectangular or oval, deep or shallow basins, small bathrooms or comprehensive solutions, HI-MACS®'s range offers creative architects and bathroom planner's numerous options.



B suitable for bathroom

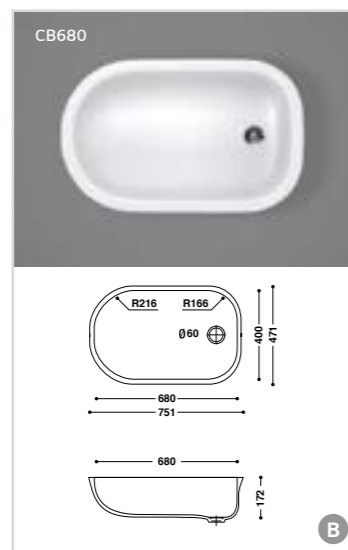
HI-MACS® Basins for the bathroom – Top mount installation

These three basins are HI-MACS® answer to the trend for linear designs. All three basins were exclusively designed as top-mounted bowls. The narrow radius of the two rectangular models creates exceptionally spacious basins.




HI-MACS® Baby Bath

The neo-natal ward of a hospital is the one place where maximum hygiene, ergonomics and warmth are essential. The ergonomic shape of the bowl is specifically designed for babies.



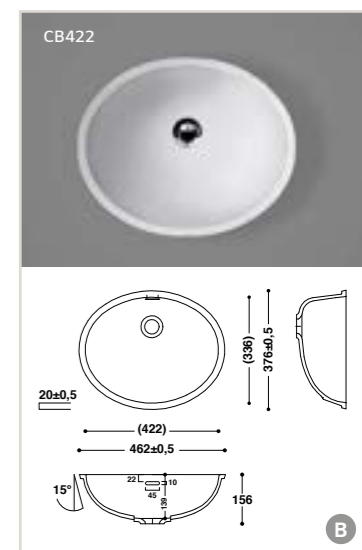
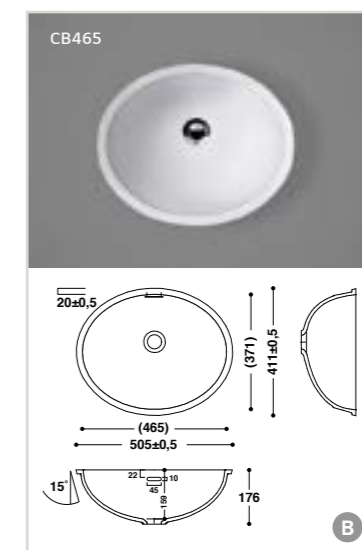
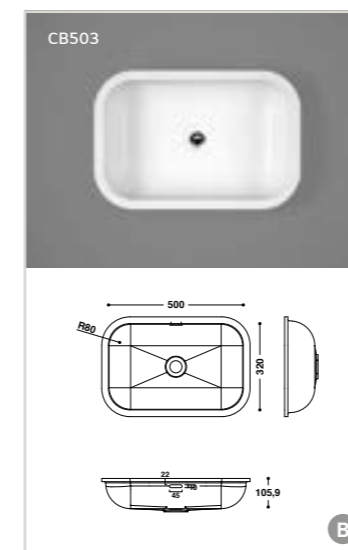
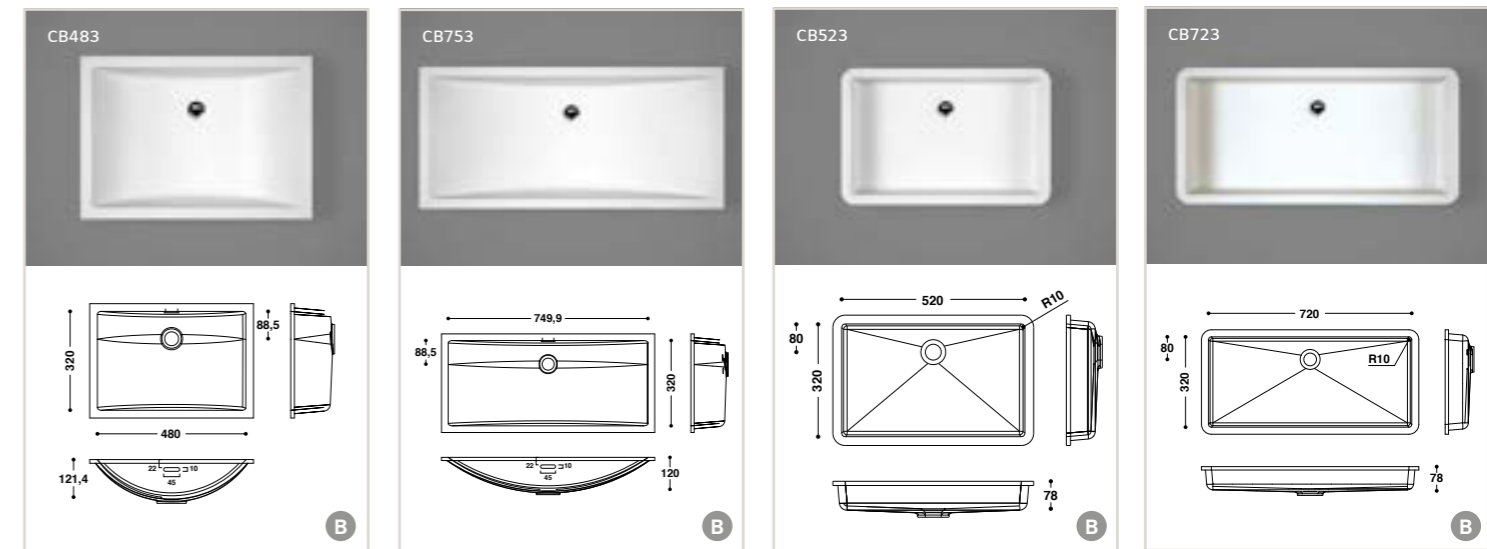
- The HI-MACS® basins CB523, CB723, the HI-MACS® Top Mounted Basins Collection and the HI-MACS® Baby Bath are only available without overflow.
- All other HI-MACS® basins are available with and without overflow.



Alpine White S028

HI-MACS® sinks, washbasins, Baby Bath, baths and shower trays are exclusively available in Alpine White S028.

Warranty: 15 years on all precast HI-MACS® basins, sinks, baby bath, baths and shower trays.



New Bath and Shower Tray Collection.
Even more choices from HI-MACS® for a
beautifully designed bathroom.



Please note:

1. The delivery includes either the bath or shower tray (as shown in the sketch) and the matching installation material consisting of height-adjustable feet, a sound-insulating mat and a wooden stabilisation board.
2. Sheet material is also needed to create the installation seen in the photos.

HI-MACS® Baths

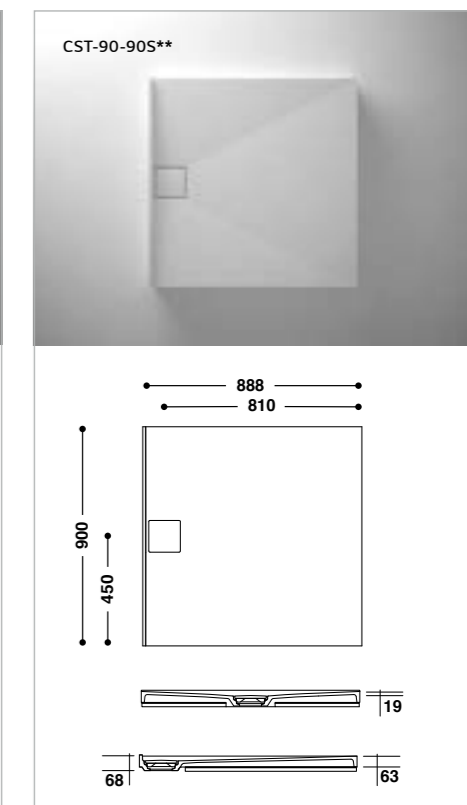
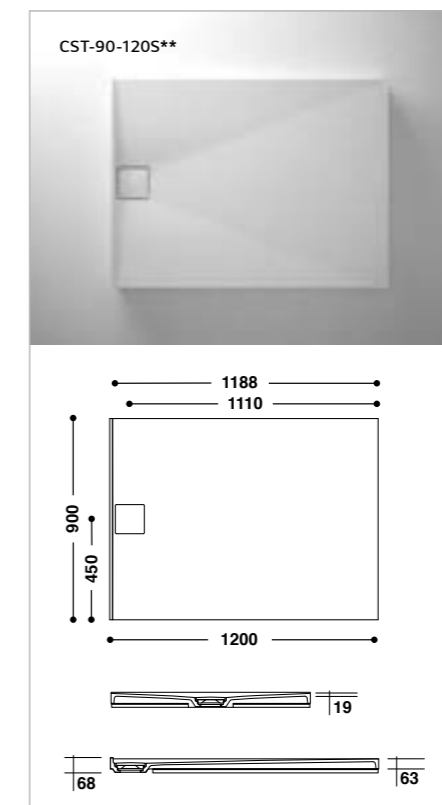
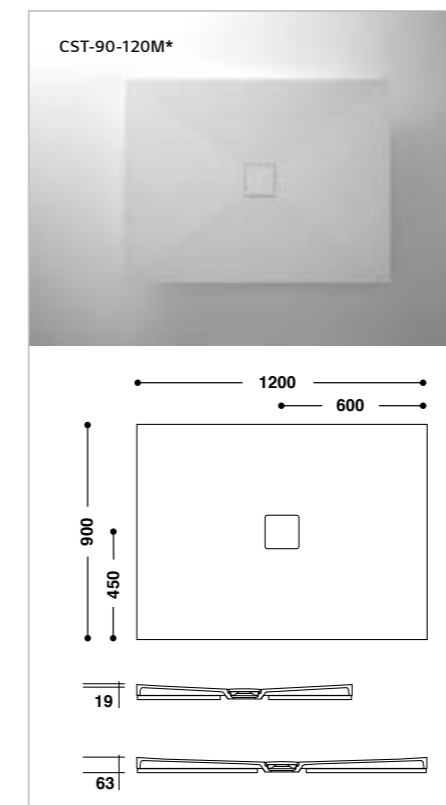
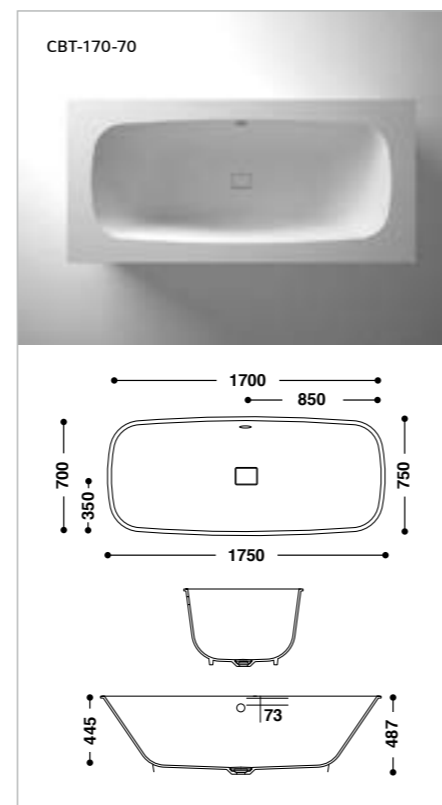
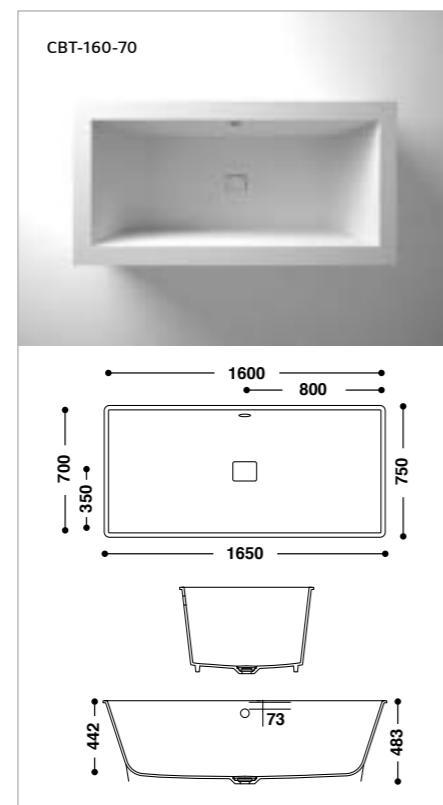
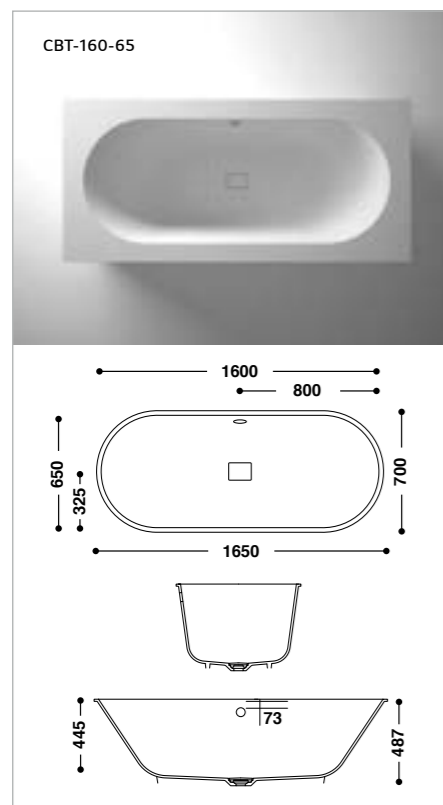
Alongside washbasins, the bath is the central element of a beautifully designed bathroom. And now both are available in the same material: sleek, but also functional, in a useful, aesthetic unit. All three new baths are designed for integrated installation. The bath is inserted flush-mounted within the panel, so that visually the

product is seamless: no visible joins and therefore easy to maintain with hygienic surfaces. The new baths from HI-MACS® are the perfect way to complete the range and make it more than just a bathroom – they transform it into an all-round feel-good experience.

HI-MACS® Shower Trays

HI-MACS® is the perfect material for bathrooms, with its warm, silky smooth feel. And the properties that make it so, also create a product which is incredibly easy to clean, and totally hygienic. The new shower trays from HI-MACS® offer all of these advantages and

more: three simple models extend the opportunities to bring the design and functional features of the bathroom to the forefront to design perfect wellness areas in homes, hotels and public spaces.



* Middle Drainhole

** Side Drainhole

** Side Drainhole

Please feel free to contact us
for further information.

HI-MACS®. Because Quality Wins.

European Headquarters:
LG Hausys Europe GmbH
Lyoner Str. 15
60528 Frankfurt
Germany
info@himacs.eu

To find the contact for your region, please visit our website.

himacs.eu



HI-MACS® Natural Acrylic Stone™ and HI-MACS Exteria® are registered trademarks of LG Hausys Europe GmbH. All other trademarks and product names are trademarks or registered trademarks of their respective rights owners. The information contained in this brochure is intended to be for information only and can be amended at any time without prior notification. ©2020. LG Hausys Europe GmbH. All rights reserved.

